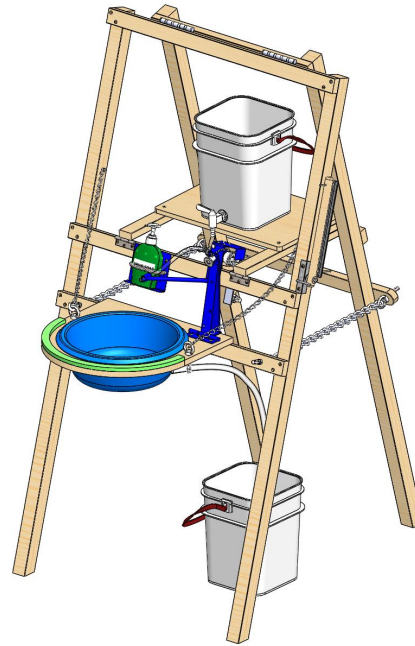


# DISABILITY HANDWASH STATION

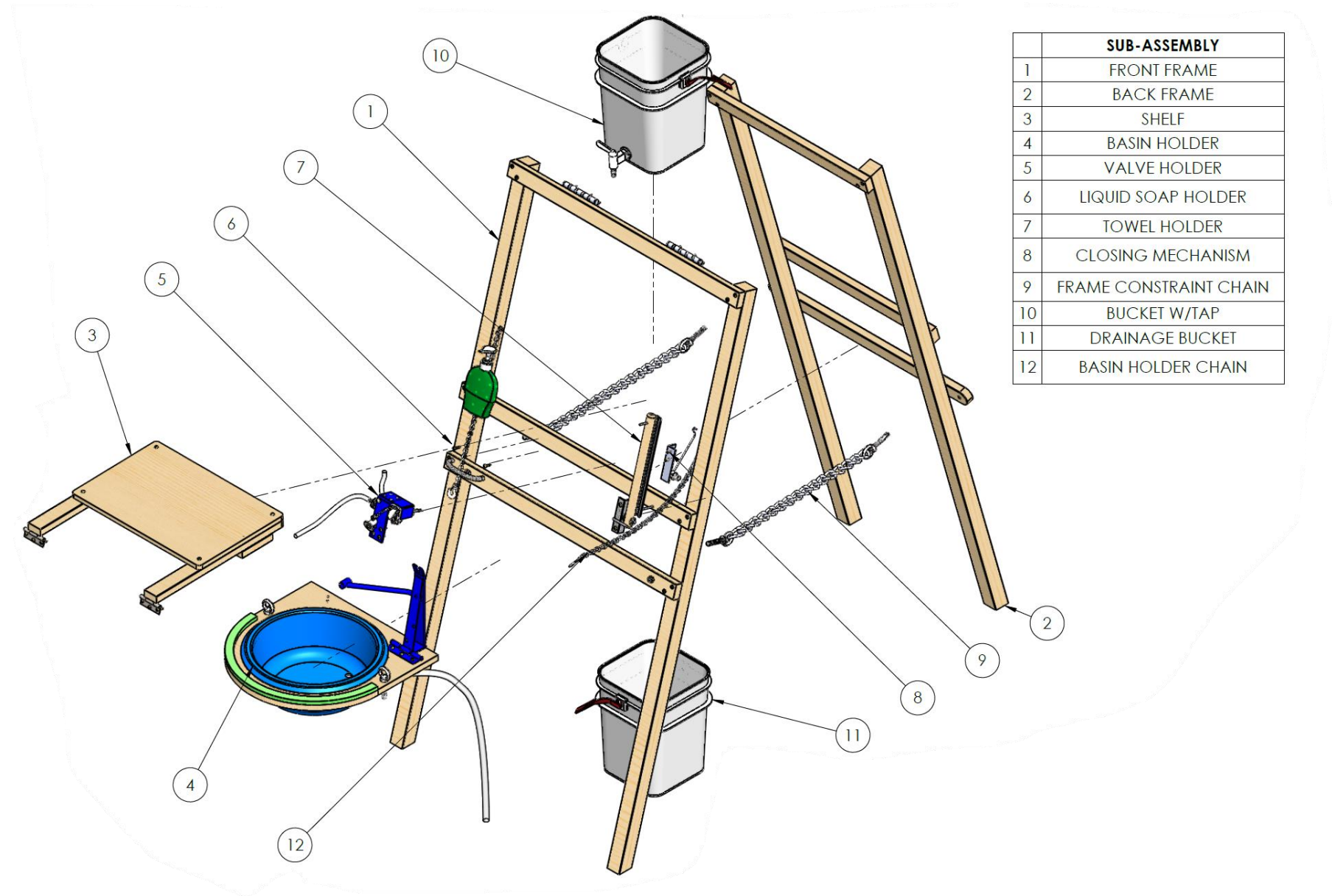
## Maker Manual



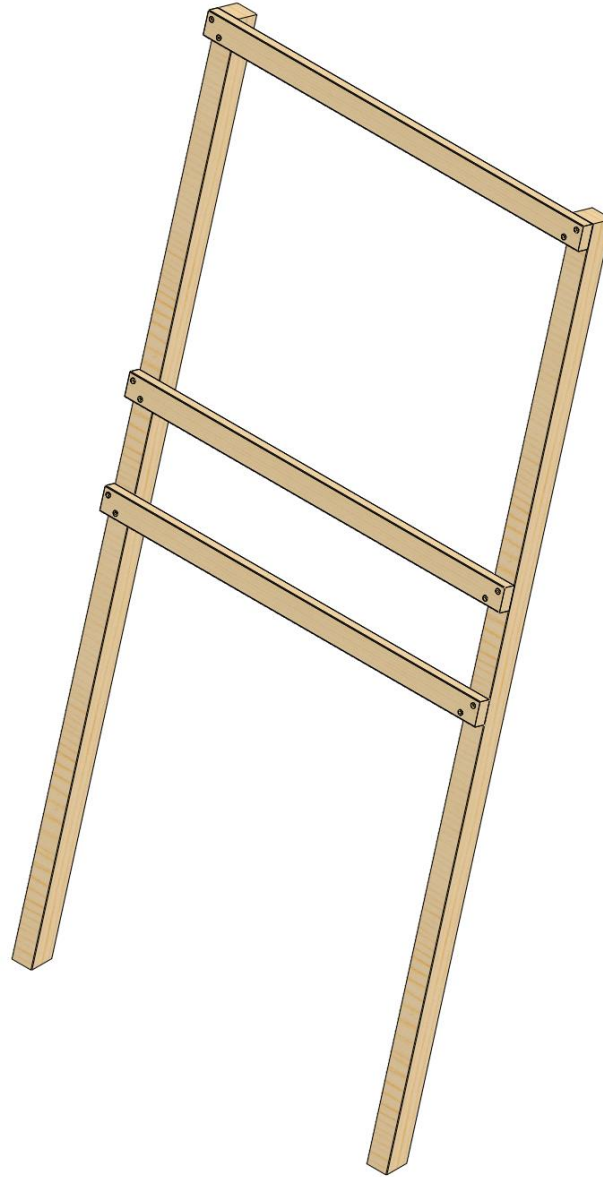
**Please use in conjunction with the engineering drawing pack**



**FIELD READY**



# SUB-ASSEMBLY 1: FRONT FRAME



# SUB-ASSEMBLY 1: MATERIALS



1.	<b>2" x 2" TIMBER [L= 1500MM]</b>	<b>x2</b>
----	---------------------------------------	-----------



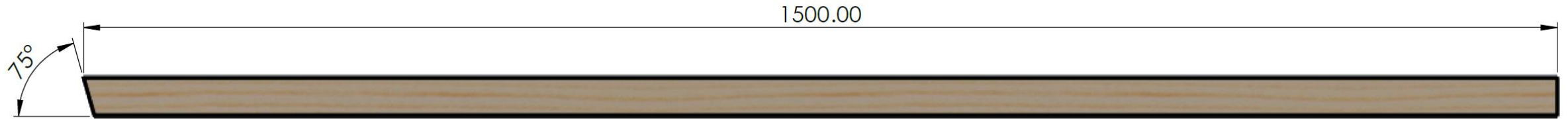
2.	<b>2" x 1" TIMBER [L= 750MM]</b>	<b>x3</b>
----	--------------------------------------	-----------



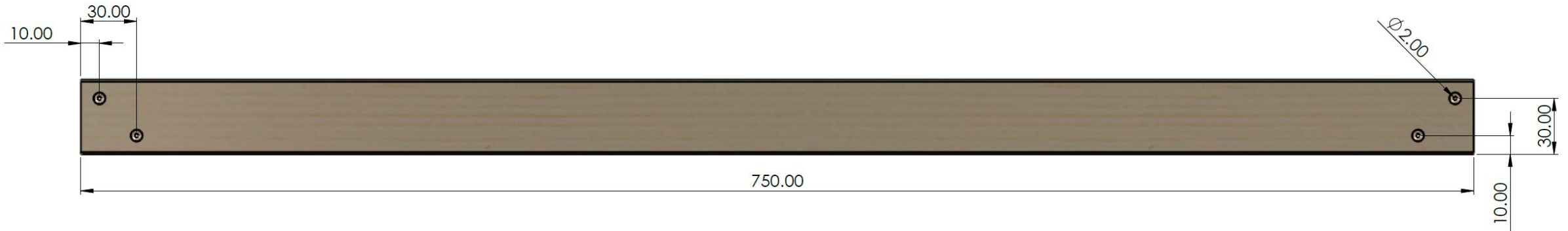
3.	<b>40MM COUNTERSUNK WOOD SCREWS</b>	<b>x12</b>
----	---	------------

# SUB-ASSEMBLY 1: PARTS

1)

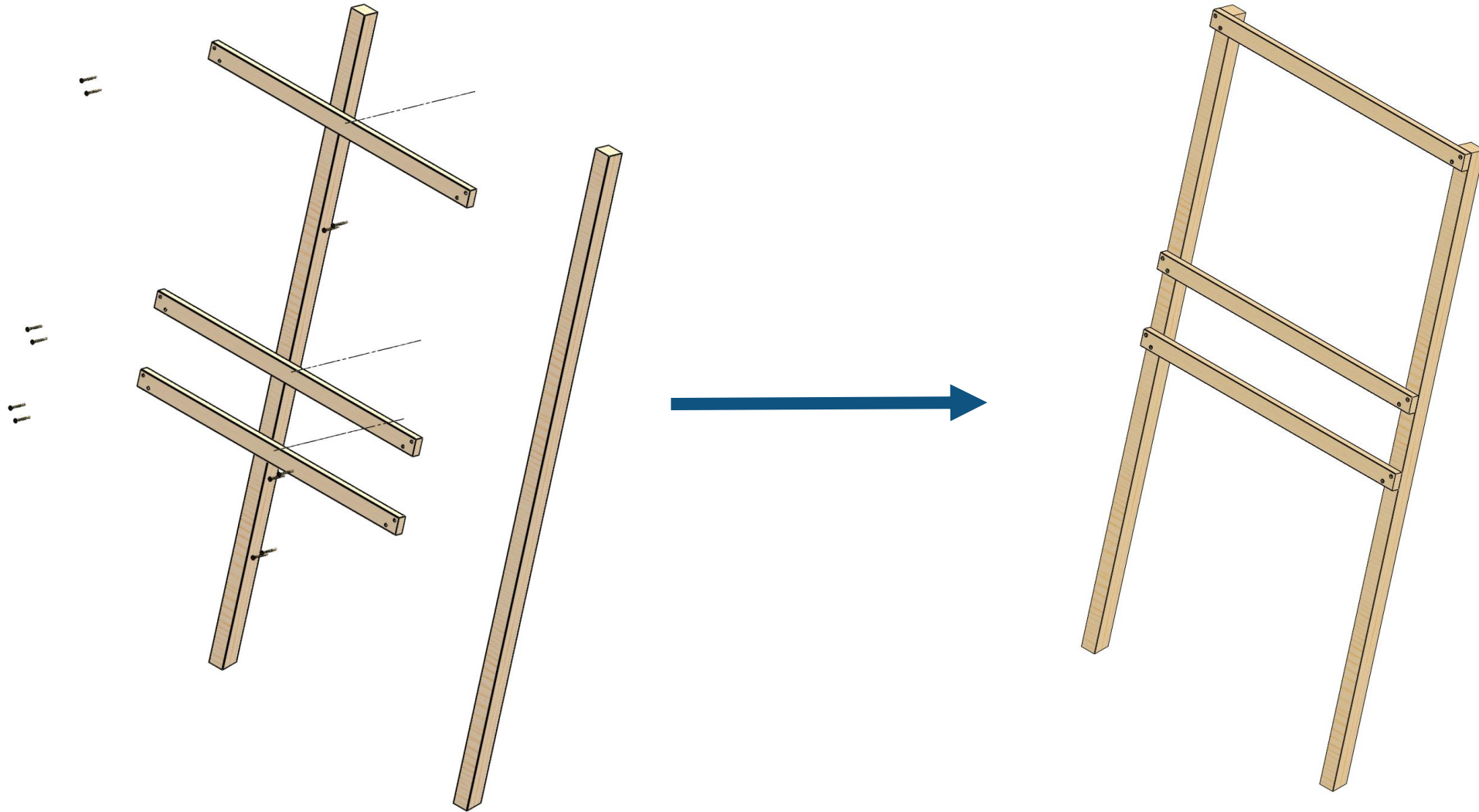


2)



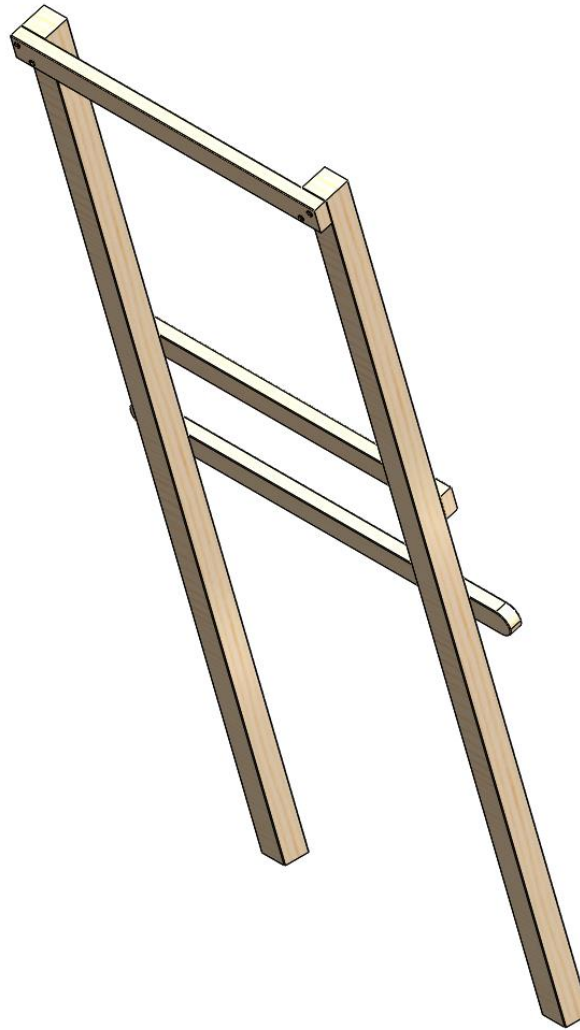
**1) CUT TIMBER TO GIVEN DIMENSION x2. 2) CUT TIMBER TO GIVEN DIMENSION x3.  
SAND AND DEBUR SHARP EDGES.**

# SUB-ASSEMBLY 1: ASSEMBLY



**ASSEMBLE THE FRONT FRAME AS SHOWN. REFER TO ENGINEERING DRAWING FOR DIMENSIONS.**

## SUB-ASSEMBLY 2: BACK FRAME





# SUB-ASSEMBLY 2: MATERIALS



4.	<b>2" x 2" TIMBER [L= 1500MM]</b>	<b>x2</b>
----	---------------------------------------	-----------



5.	<b>2" x 1" TIMBER [L= 520MM]</b>	<b>x2</b>
6.	<b>[L= 650MM]</b>	<b>x1</b>

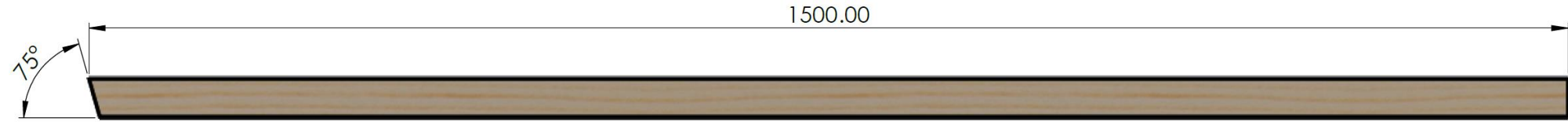


7.	<b>40MM COUNTERSUNK WOOD SCREWS</b>	<b>x12</b>
----	---	------------

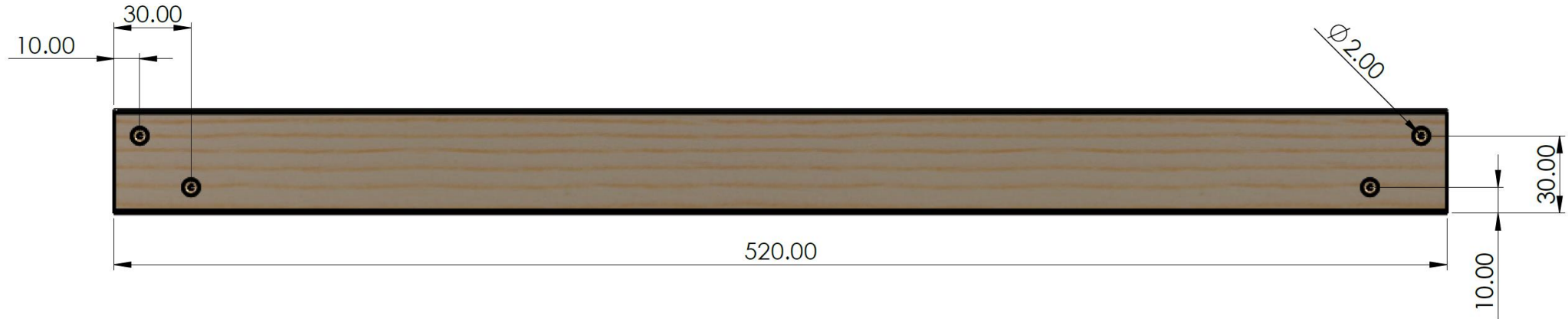


# SUB-ASSEMBLY 2: PARTS

4)



5)

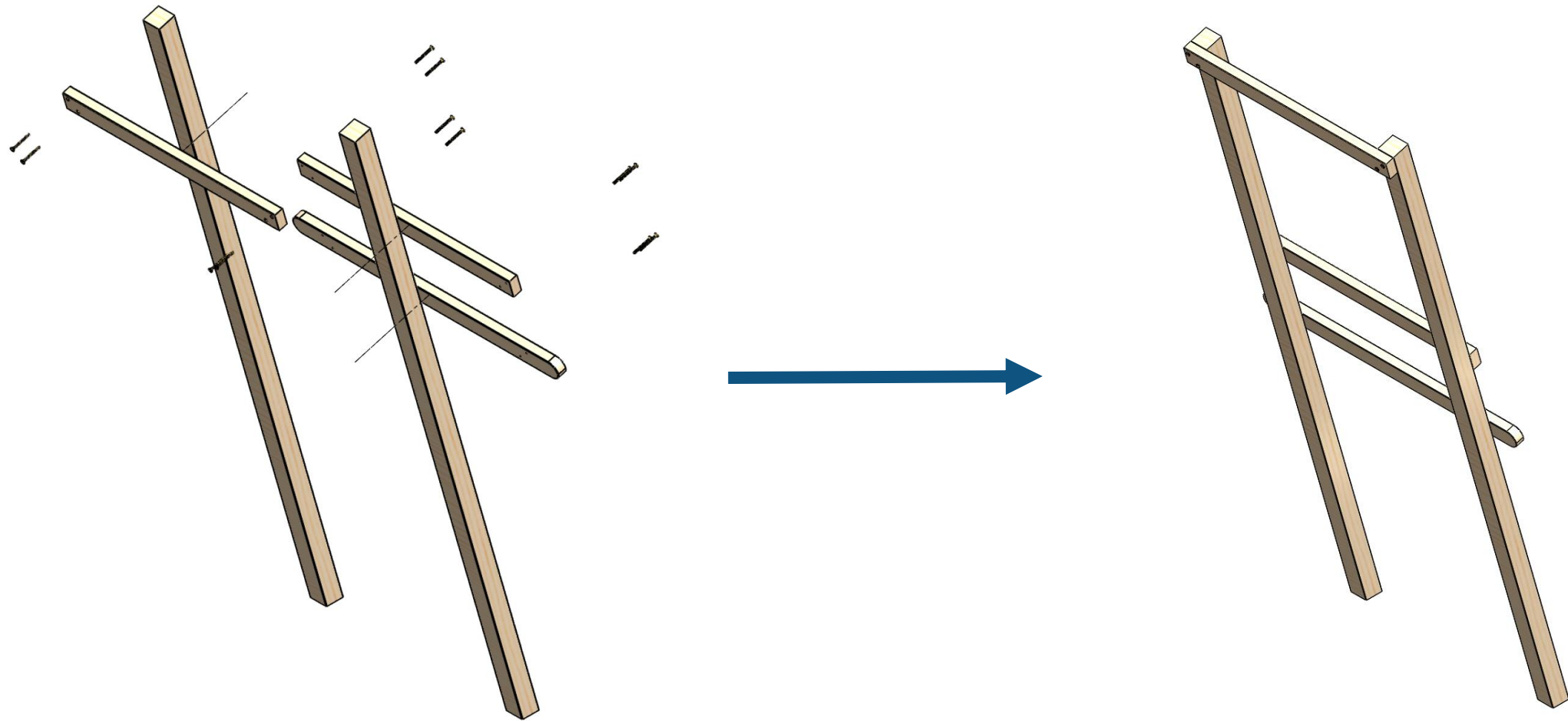


6)



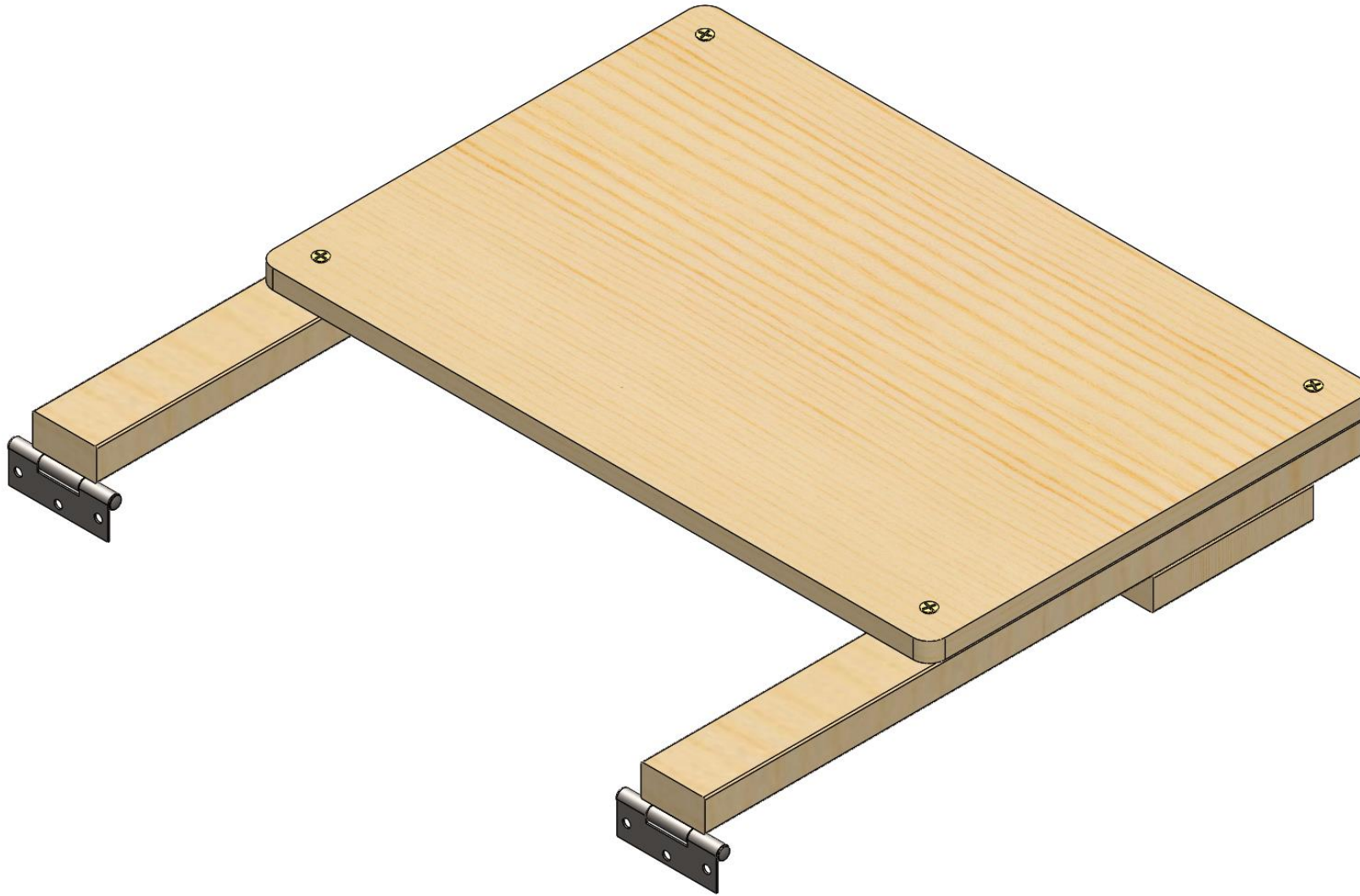
**4) CUT TIMBER TO GIVEN DIMENSION x2. 5) CUT TIMBER TO GIVEN DIMENSION x2. 6) CUT TIMBER TO GIVEN DIMENSION. SAND AND DEBUR SHARP EDGES.**

## SUB-ASSEMBLY 2: ASSEMBLY



**ASSEMBLE THE BACK FRAME AS SHOWN. REFER TO ENGINEERING DRAWING FOR DIMENSIONS.**

## SUB-ASSEMBLY 3: SHELF



# SUB-ASSEMBLY 3: MATERIALS



8.	<b>12MM PLYWOOD</b> <b>[420MM x 280MM]</b>	<b>x1</b>
----	---	-----------



9.	<b>2" x 1" TIMBER</b> <b>[L= 420MM]</b>	<b>x2</b>
10.	<b>[L= 100MM]</b>	<b>x2</b>

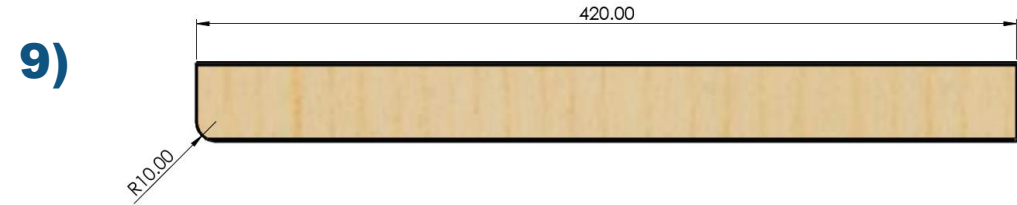


11.	<b>TEE HINGES</b> <b>[70mm X 140mm]</b>	<b>x2</b>
-----	--	-----------



12.	<b>20MM COUNTERSUNK WOOD SCREWS</b>	<b>x10</b>
13.	<b>40MM COUNTERSUNK WOOD SCREW</b>	<b>x4</b>

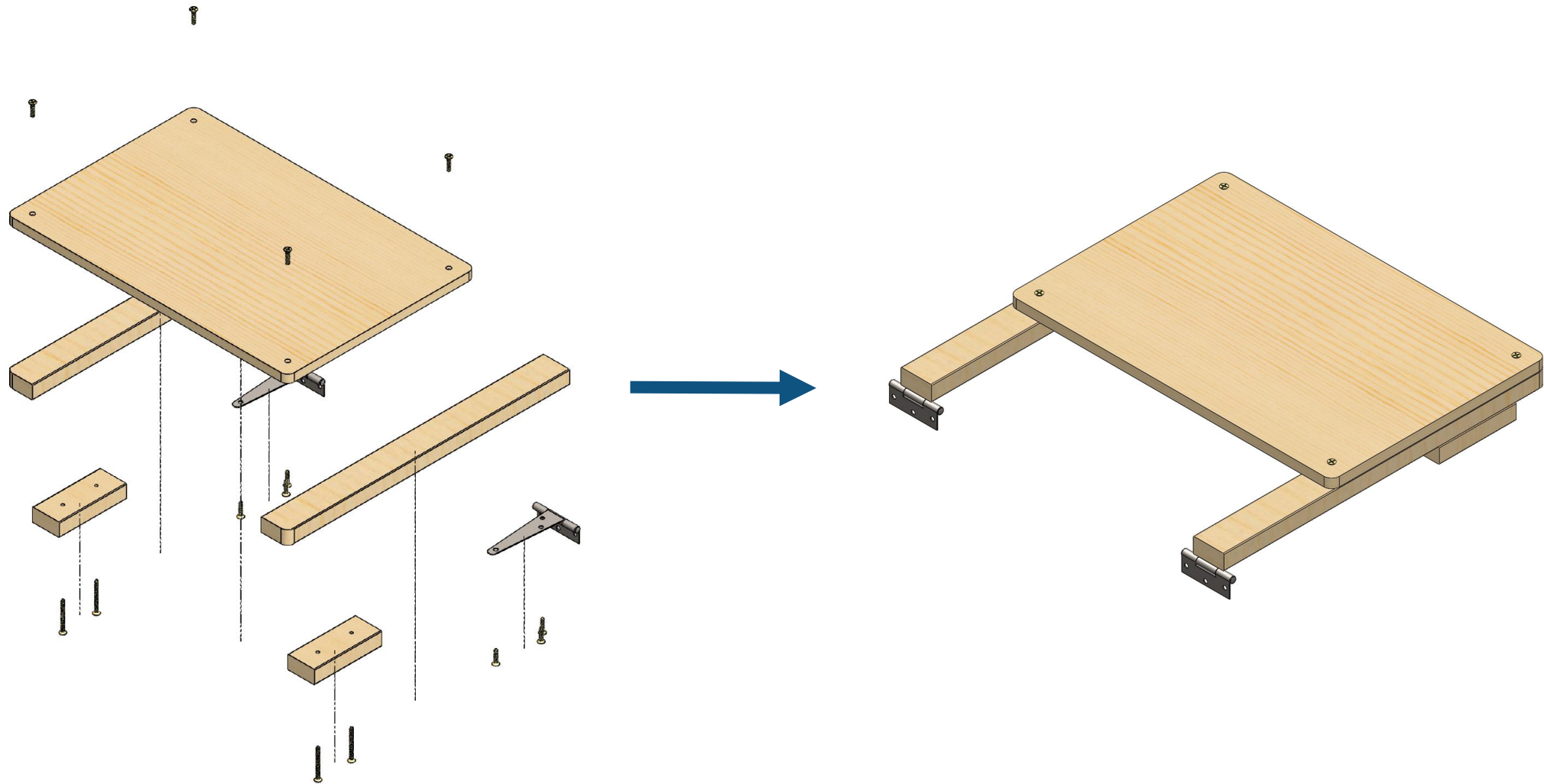
# SUB-ASSEMBLY 3: PARTS



**8) CUT PLYWOOD TO GIVEN DIMENSION. 9) CUT TIMBER TO GIVEN DIMENSION x2. 10) CUT TIMBER TO GIVEN DIMENSION x2. SAND AND DEBUR SHARP EDGES.**

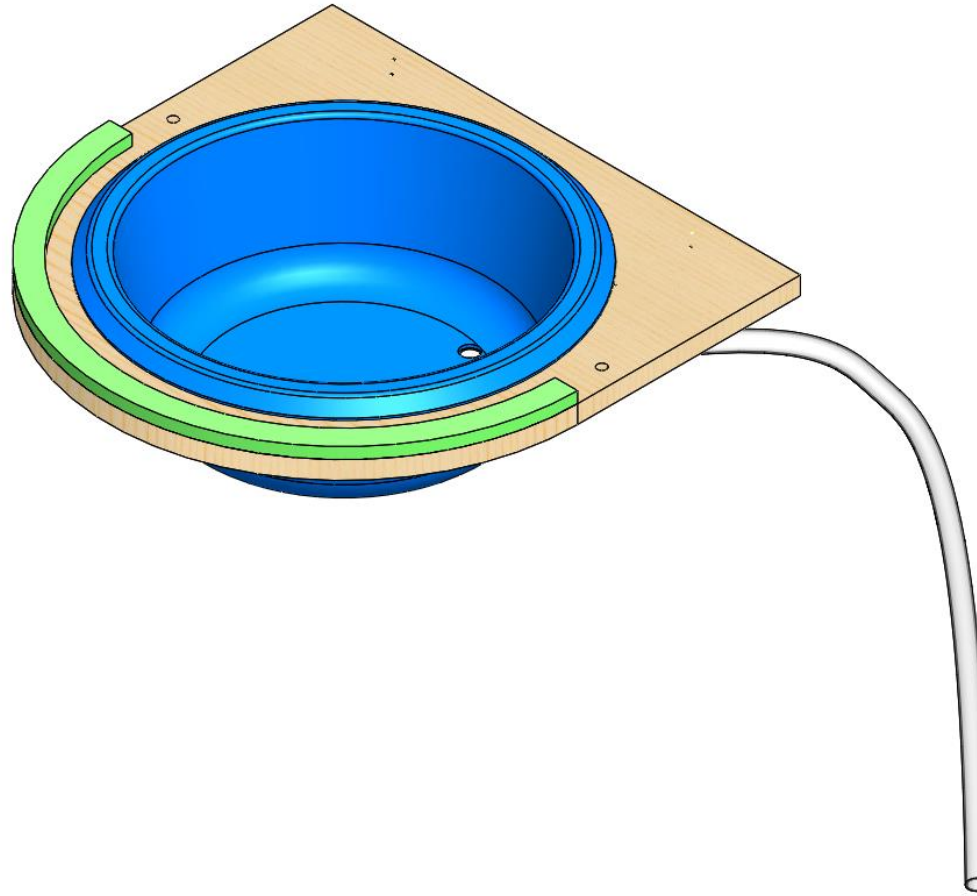


## SUB-ASSEMBLY 3: ASSEMBLY



**ASSEMBLE THE SHELF AS SHOWN. REFER TO ENGINEERING DRAWING FOR DIMENSIONS.**

## SUB-ASSEMBLY 4: BASIN HOLDER





# SUB-ASSEMBLY 4: MATERIALS



14.	<b>16MM PLYWOOD [415MM x 405MM]</b>	<b>x1</b>
-----	---	-----------



15.	<b>TEE HINGES [70mm X 140mm]</b>	<b>x2</b>
-----	--------------------------------------	-----------



16.	<b>PLASTIC BASIN</b>	<b>x1</b>
-----	----------------------	-----------



17.	<b>FOAM MAT [655MM x 20MM] STRIP</b>	<b>x2</b>
-----	--	-----------



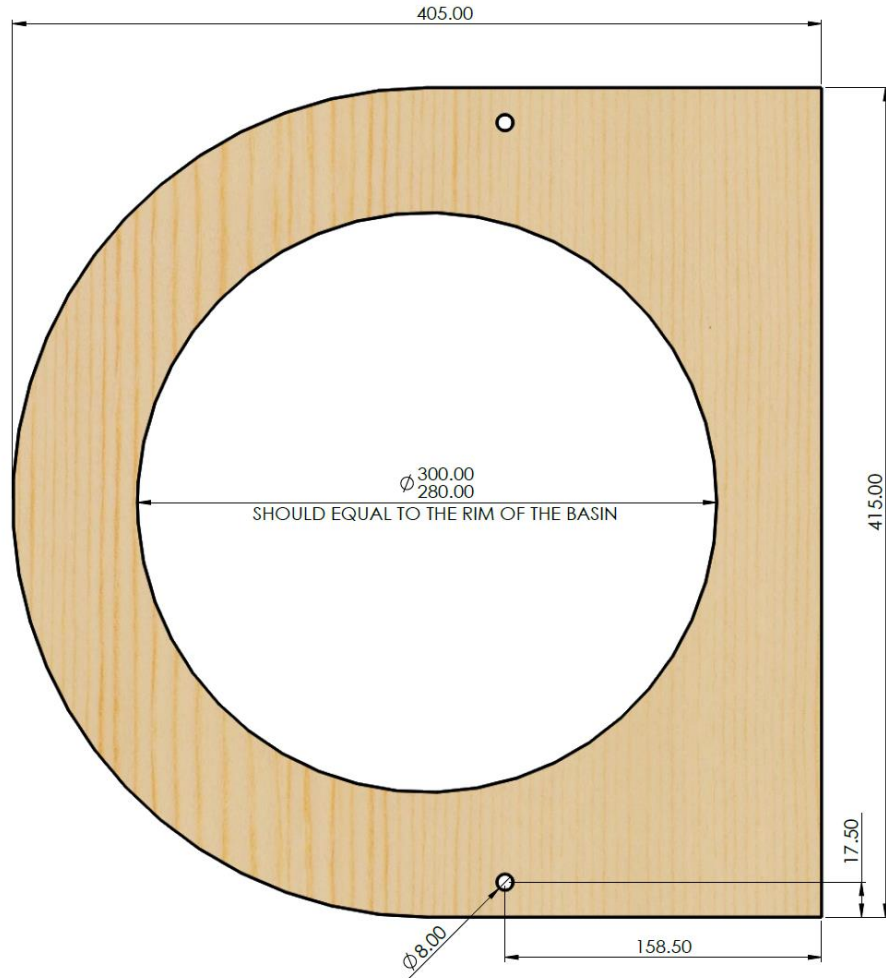
18.	<b>1" PVC ELBOW</b>	<b>x1</b>
-----	---------------------	-----------



19.	<b>5/8" HOSE [L= 670MM]</b>	<b>x1</b>
-----	---------------------------------	-----------

## SUB-ASSEMBLY 4: PARTS

14)

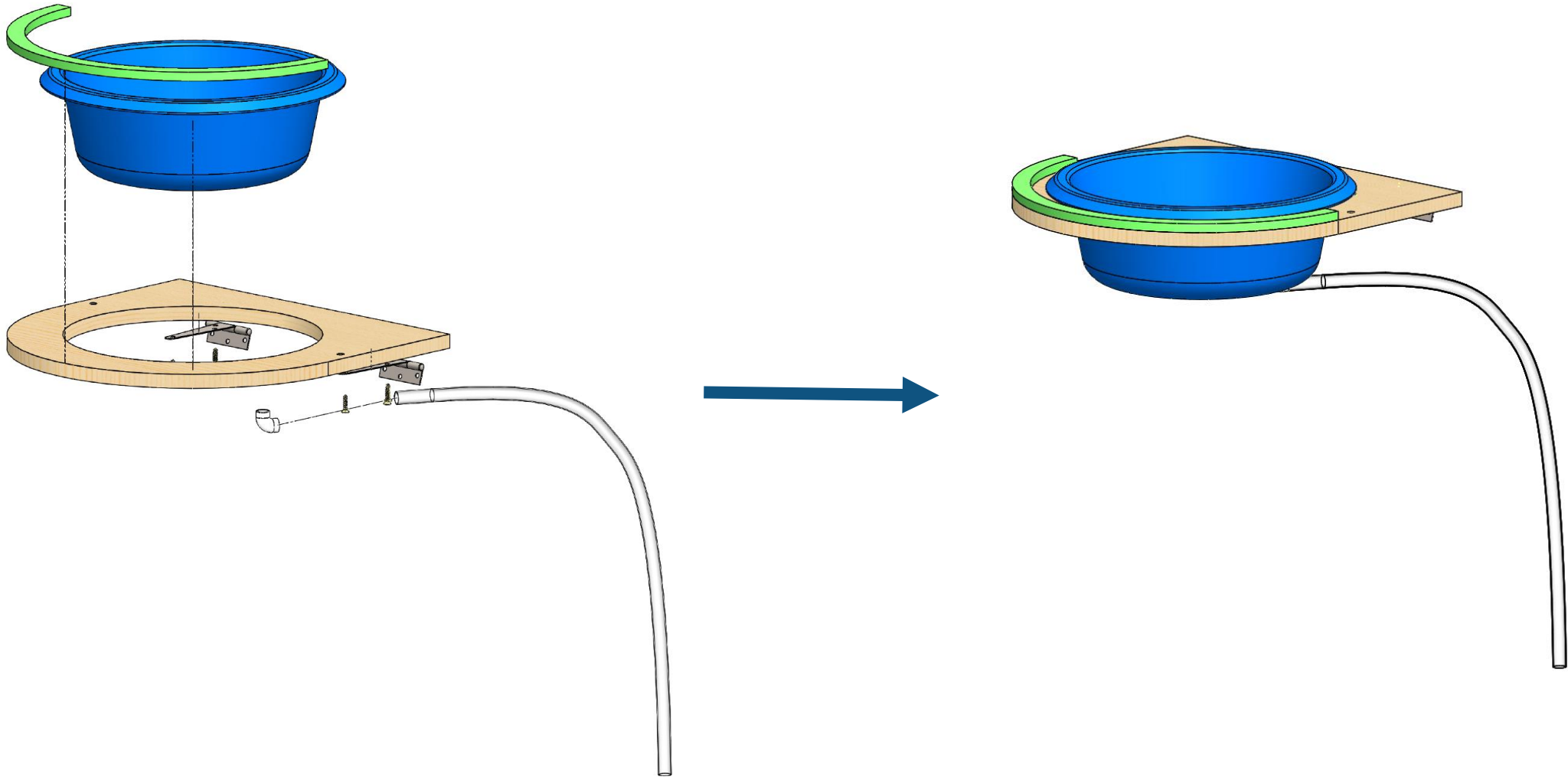


16)



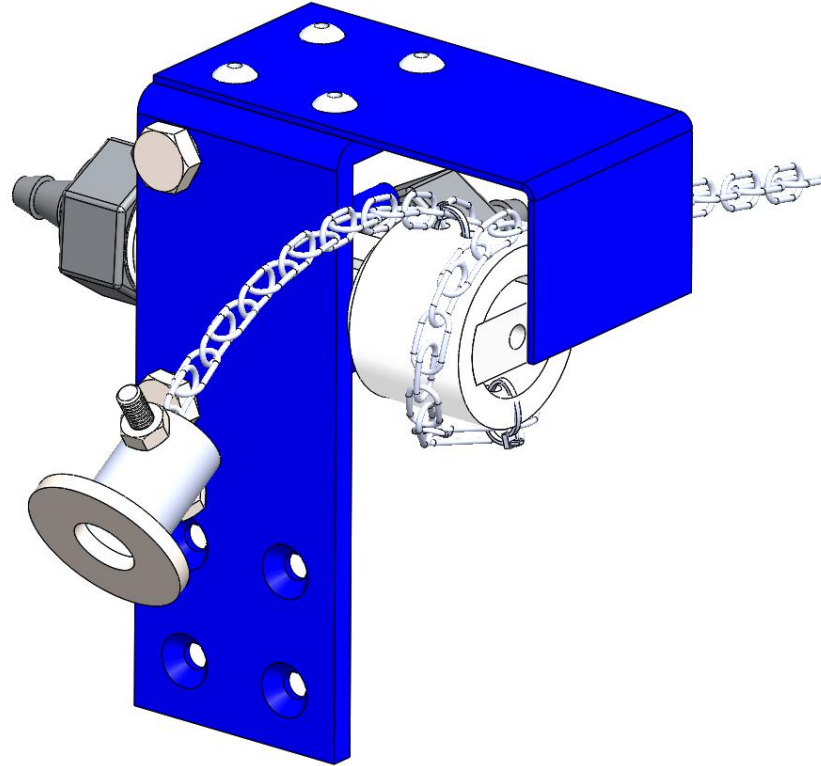
**14) CUT AND DRILL HOLES IN PLYWOOD TO THE GIVEN SPECIFICATIONS. 16) DRILL A Ø15MM HOLE CLOSE TO THE EDGE OF THE BASIN.**

## SUB-ASSEMBLY 4: ASSEMBLY



**ASSEMBLE THE BASIN HOLDER AS SHOWN. USE MULTIPURPOSE GLUE TO ATTACH FOAM MAT TO WOOD, ELBOW TO BASIN AND HOSE TO ELBOW. REFER TO ENGINEERING DRAWING FOR DIMENSIONS.**

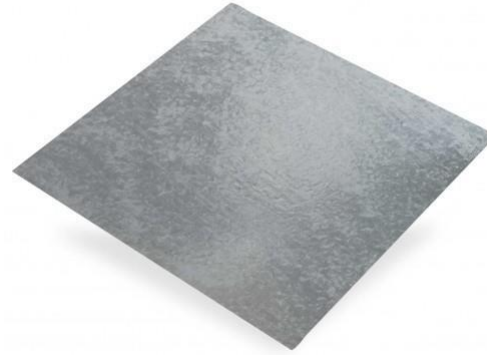
## SUB-ASSEMBLY 5: VALVE HOLDER



# SUB-ASSEMBLY 5: MATERIALS



20.	<b>40MM x 3MM MILD STEEL FLAT BAR [ L = 145MM]</b>	<b>x1</b>
-----	--	-----------



21.	<b>18 GUAGE GALVANIZED STEEL SHEET [105MM x 30MM]</b>	<b>x1</b>
-----	---	-----------



22.	<b>RIVETS [3.2MM x 16MM]</b>	<b>x4</b>
-----	----------------------------------	-----------



23.	<b>5MM ROUND STEEL BAR [L= 25MM]</b>	<b>x2</b>
-----	--	-----------



24.	<b>25MM METAL SADDLE</b>	<b>x1</b>
-----	------------------------------	-----------



25.	<b>PEX ANGLE VALVE QUARTER TURN 1/2 X 1/2" CHROME</b>	<b>x1</b>
-----	---	-----------

# SUB-ASSEMBLY 5: MATERIALS



26.	<b>PVC PRESSURE PLAIN TEE 40MM</b>	<b>x1</b>
-----	--	-----------



27.	<b>CABLE TIES 2.5 X 100MM</b>	<b>x2</b>
-----	-----------------------------------	-----------



28.	<b>BOLT &amp; NUT HEX M6 X 25</b>	<b>x2</b>
-----	---------------------------------------	-----------



29.	<b>1/2" HOSE CONNECTOR</b>	<b>x2</b>
-----	--------------------------------	-----------

# SUB-ASSEMBLY 5: MATERIALS



30.	<b>ROUND STEEL TUBE 20 X 1.6 X 20MM</b>	<b>x1</b>
-----	---	-----------



31.	<b>FLAT WASHER M10</b>	<b>x1</b>
-----	------------------------	-----------



32.	<b>BOLT &amp; NUT HEX M4 X 25</b>	<b>x1</b>
-----	---------------------------------------	-----------

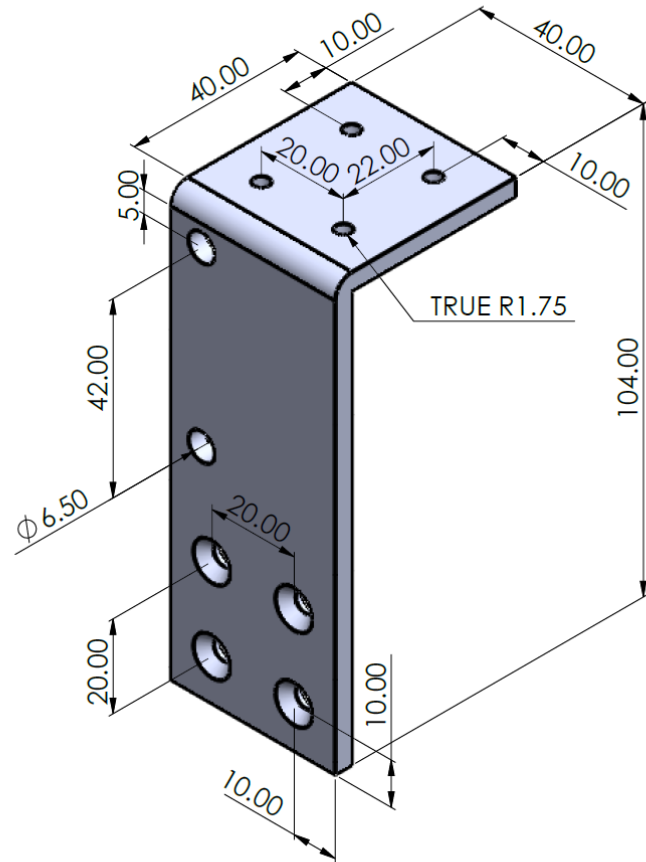


33.	<b>2MM STRAIGHT LINK CHAIN [L=200MM]</b>	<b>x1</b>
-----	--	-----------

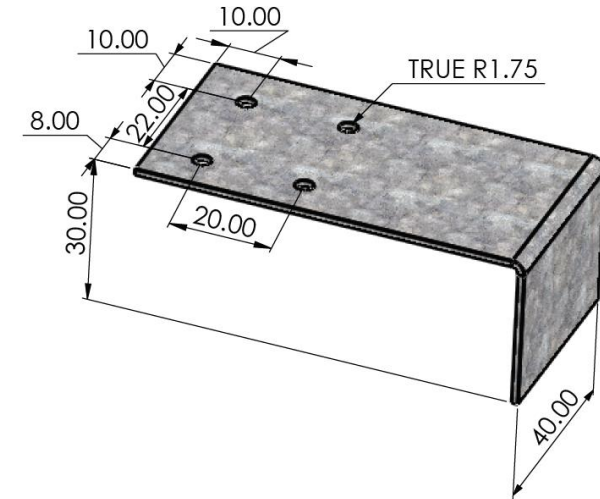


# SUB-ASSEMBLY 5: PARTS

20)



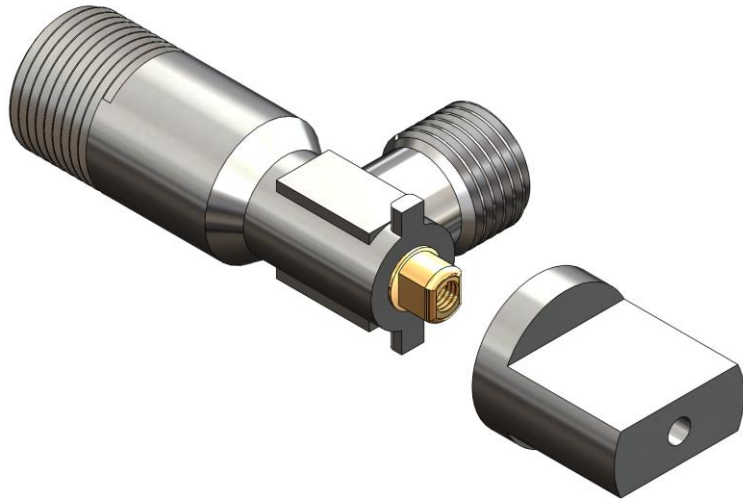
21)



**20) BEND AND DRILL HOLES TO PART'S SPECIFIED DIMENSIONS.**  
**21) BEND AND DRILL HOLES TO PART'S SPECIFIED DIMENSIONS.**

# SUB-ASSEMBLY 5: PARTS

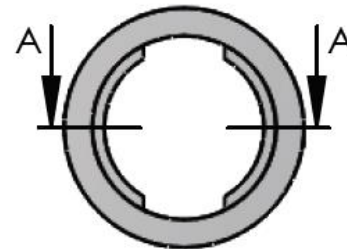
25)



26)



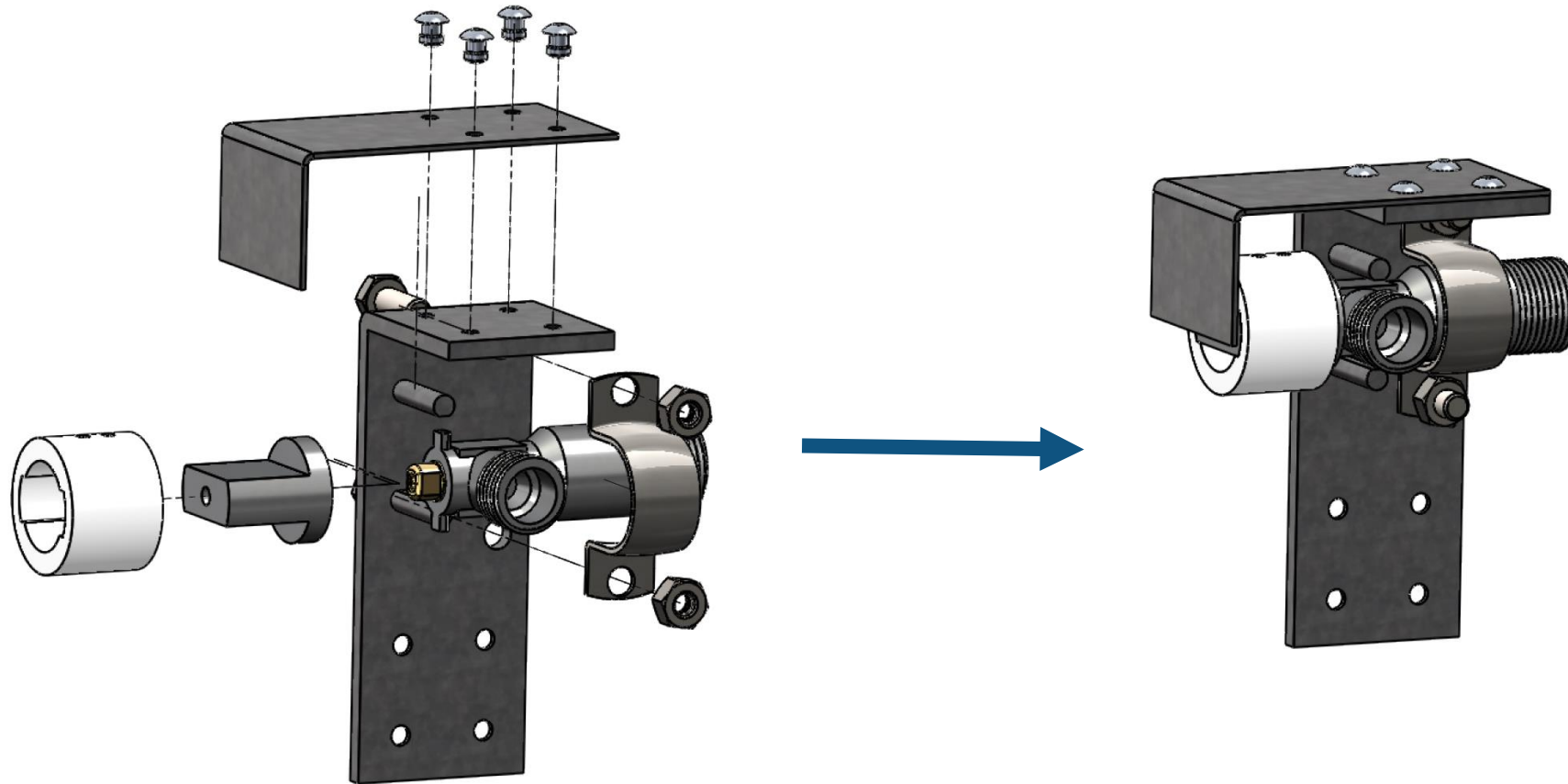
SECTION A-A



**25) REMOVE KNOB OF THE VALVE.**

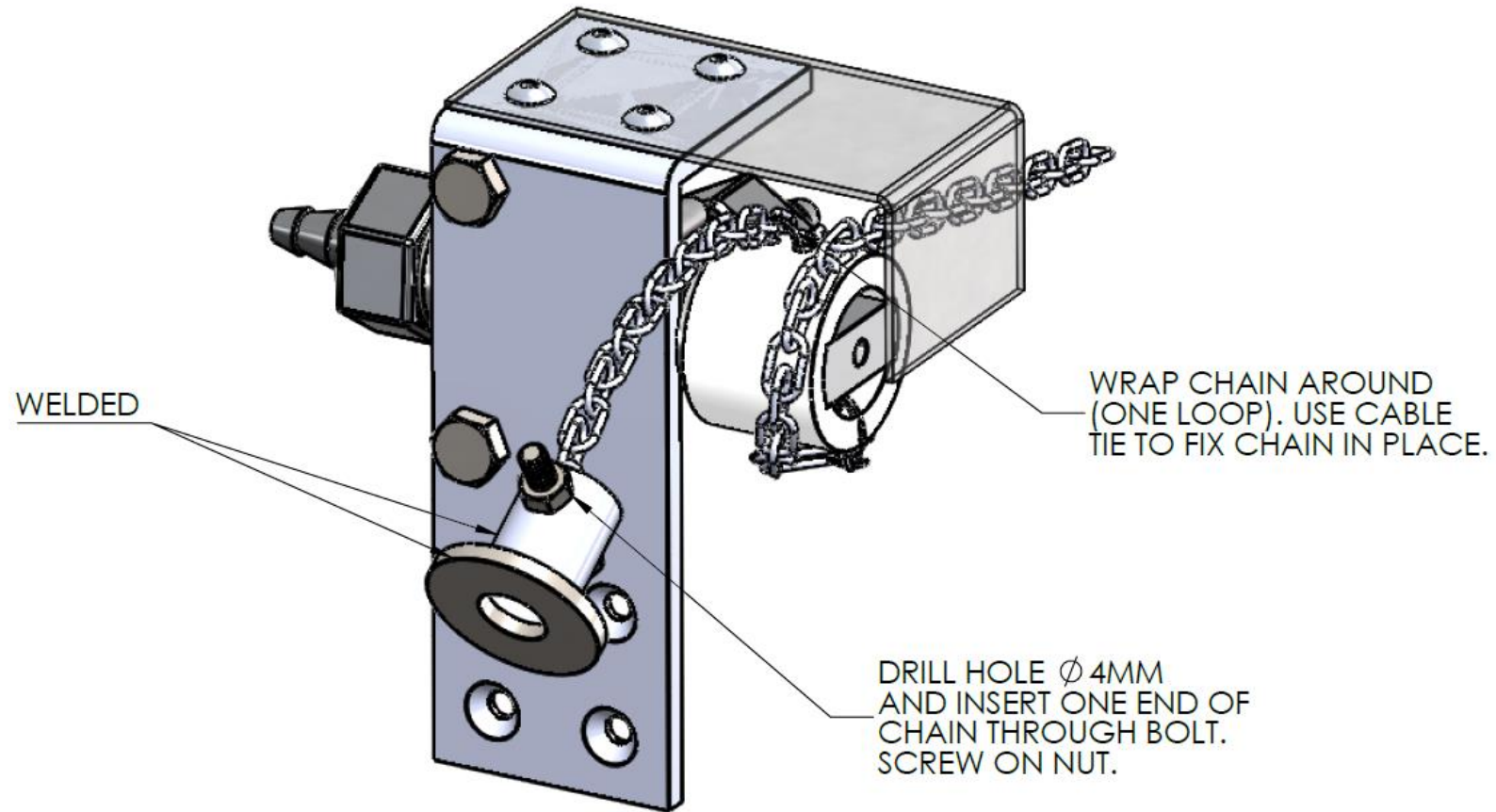
**26) CUT ONE END OF TEE AND OBTAIN THE HOLLOW CYLINDER. MAKE HOLES AND GROOVES AS SHOWN. REFER TO ENGINEERING DRAWING FOR DIMENSIONS.**

## SUB-ASSEMBLY 5: ASSEMBLY



**ASSEMBLE THE VALVE HOLDER AS SHOWN. PART 26 IS SLOT IN TO THE KNOB OF THE VALVE AND GLUED IN PLACE. PART 23 IS WELDED TO PART 20. REFER TO ENGINEERING DRAWING FOR DIMENSIONS.**

# SUB-ASSEMBLY 5: ASSEMBLY



**ASSEMBLE THE REMAINING COMPONENTS AS SHOWN. REFER TO ENGINEERING DRAWING FOR DIMENSIONS.**

# SUB-ASSEMBLY 6: LIQUID SOAP HOLDER



# SUB-ASSEMBLY 6: MATERIALS

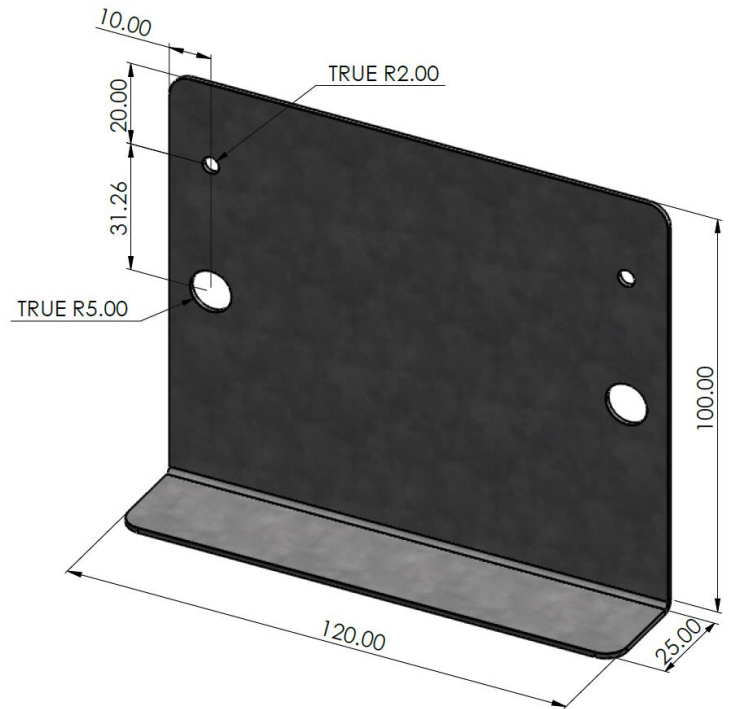


34.	18 GUAGE GALVANIZED STEEL SHEET [125MM x 120MM]	x1
-----	--	----



35.	SHOCK CORD 8MM [L=200mm]	x1
-----	-----------------------------	----

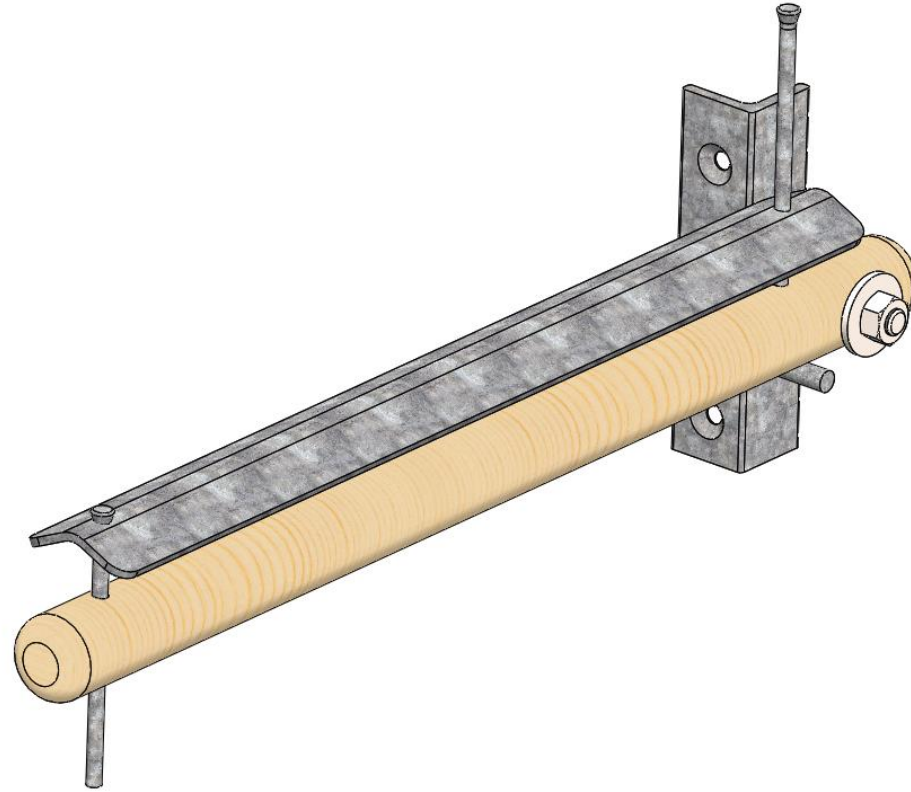
# SUB-ASSEMBLY 6: PARTS & ASSEMBLY



**BEND AND DRILL HOLES ON STEEL SHEET AS SPECIFIED. REFER TO ENGINEERING DRAWING FOR DIMENSIONS. SLOT THE SHOCK CORD THROUGH THE LARGE HOLES AS SHOWN. TIE KNOTS AT THE BACK.**



## SUB-ASSEMBLY 7: TOWEL HOLDER



# SUB-ASSEMBLY 7: MATERIALS



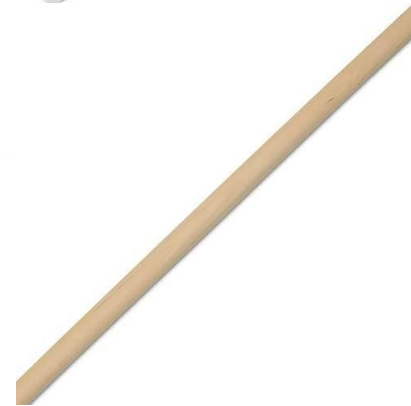
36.	<b>25MM X 3MM ANGLE IRON [L=85MM]</b>	<b>x1</b>
-----	---	-----------



37.	<b>5MM ROUND STEEL BAR [L= 45MM]</b>	<b>x1</b>
-----	--	-----------



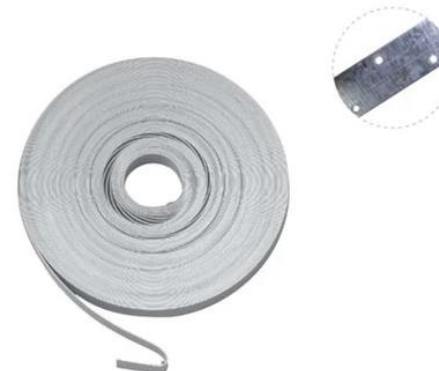
38.	<b>M6 X 30 BOLT, NUT &amp; WASHER</b>	<b>x1</b>
-----	---	-----------



39.	<b>1" WOODEN DOWL [L=290mm]</b>	<b>x1</b>
-----	-------------------------------------	-----------



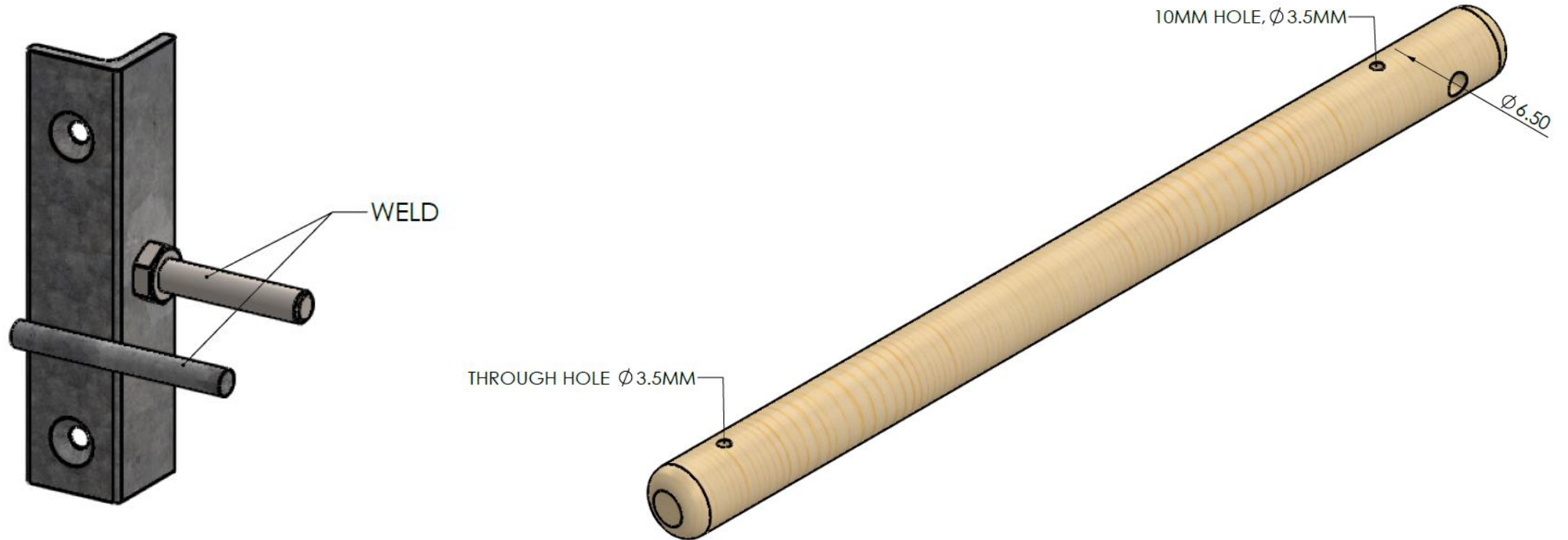
40.	<b>NAILS JOIST HEAD GALV 100MM</b>	<b>x2</b>
-----	--	-----------



41.	<b>30mm STRAPPING [L=255mm]</b>	<b>x1</b>
-----	-------------------------------------	-----------

## SUB-ASSEMBLY 7: PARTS

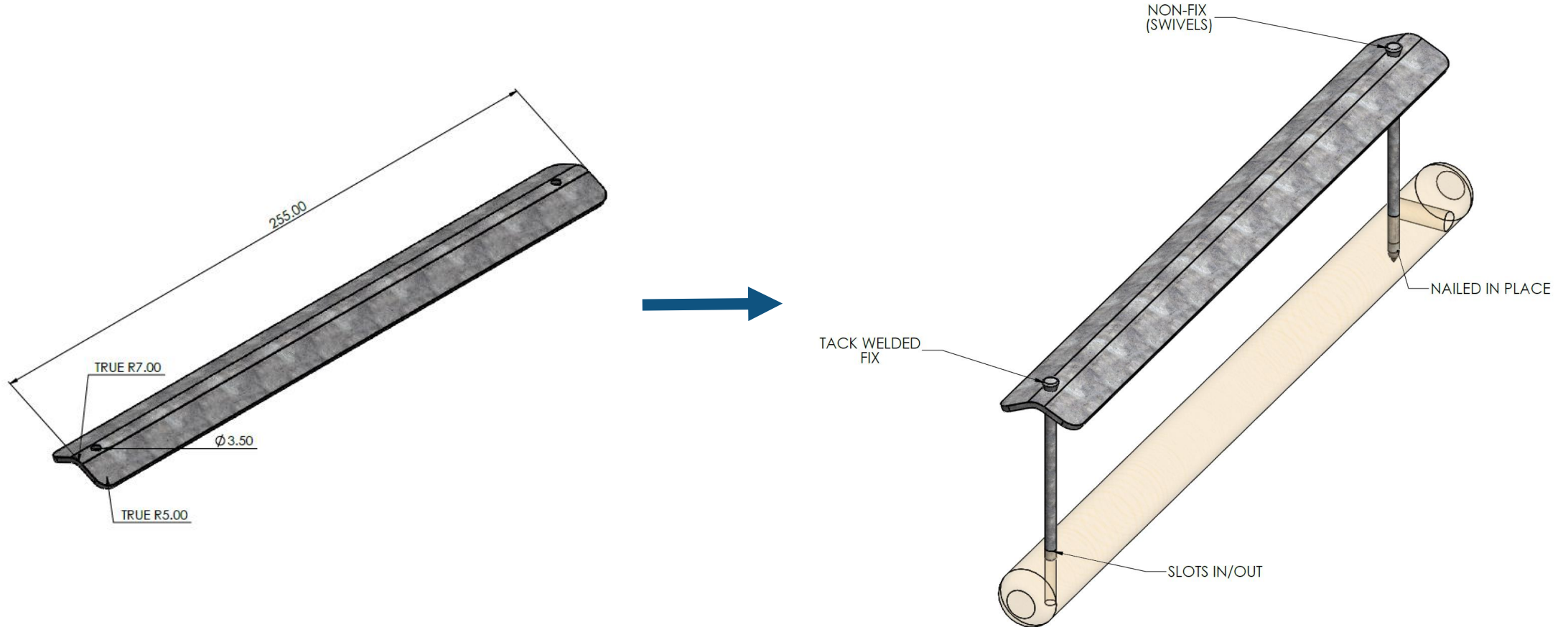
36)



**WELD STEEL ROD AND BOLT TO PART 36 AS SHOWN. DRILL HOLES AND FILLET PART 39 AS SHOWN. REFER TO ENGINEERING DRAWING FOR DIMENSIONS.**

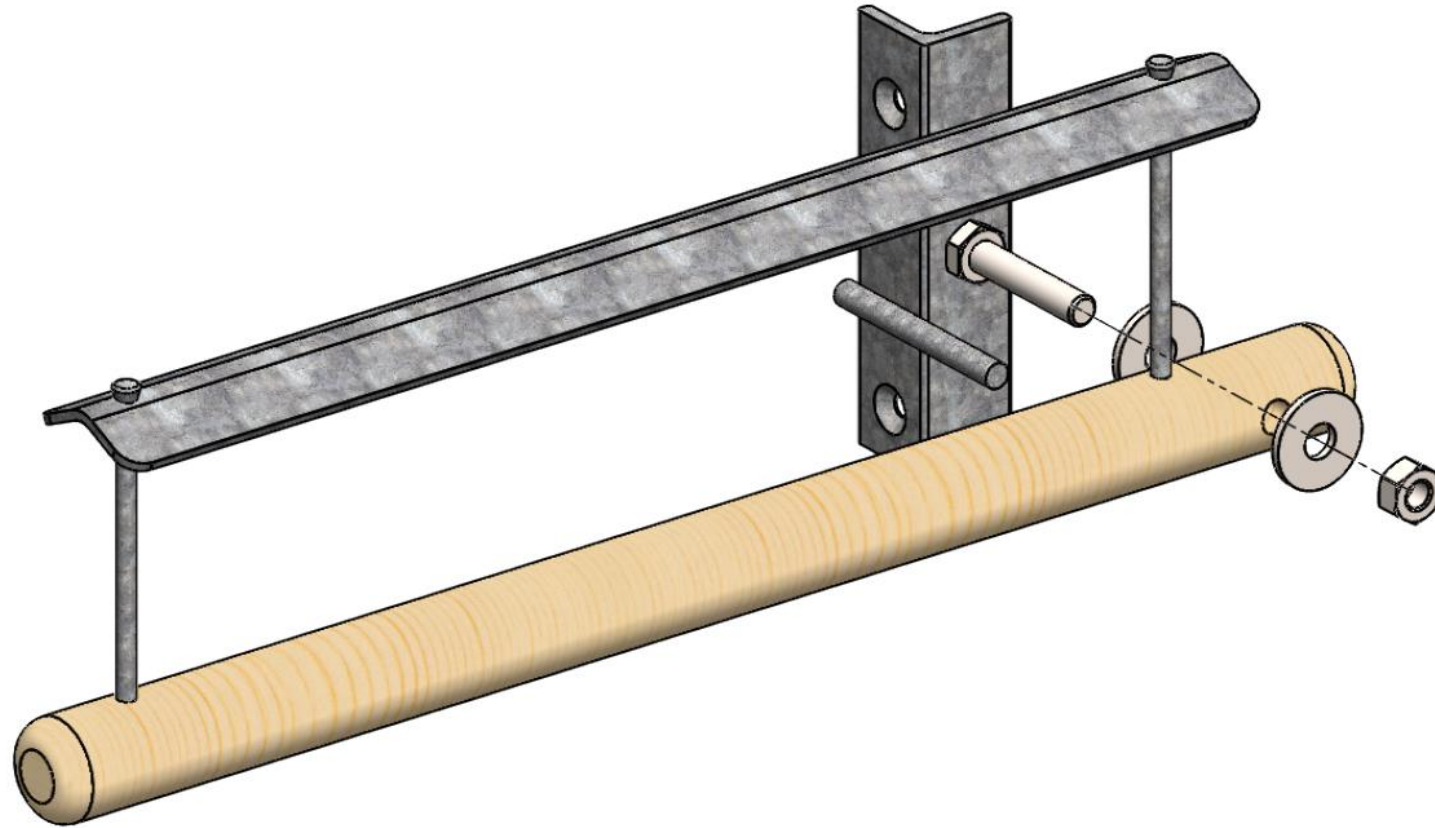
# SUB-ASSEMBLY 7: PARTS

41)



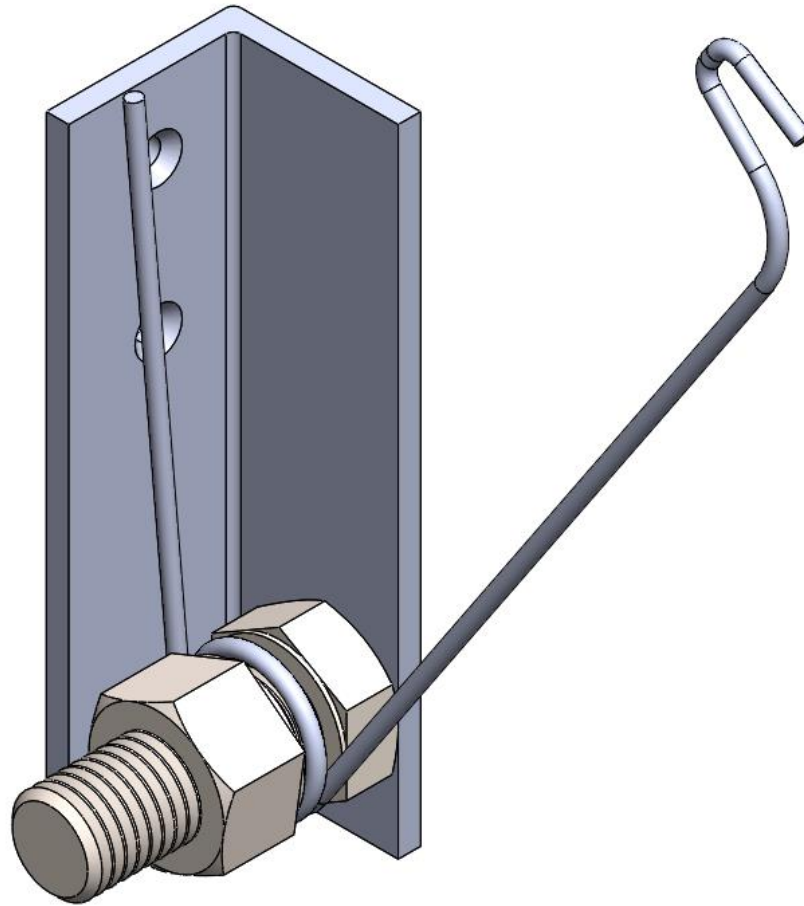
**41) CUT & BEND STRAPPING TO GIVEN SPECIFICATION. REFER TO ENGINEERING DRAWING FOR DIMENSIONS. ATTACH NAILS, DOWL & STRAPPING TOGETHER AS SHOWN**

## SUB-ASSEMBLY 7: ASSEMBLY



**ASSEMBLE THE COMPONENTS AS SHOWN. REFER TO ENGINEERING DRAWING FOR DIMENSIONS.**

## SUB-ASSEMBLY 8: VALVE CLOSING MECHANISM



# SUB-ASSEMBLY 8: MATERIALS



<b>42.</b>	<b>25MM X 3MM ANGLE IRON [L=85MM]</b>	<b>x1</b>
------------	---	-----------



<b>44.</b>	<b>M12 X 30 BOLT W/NUT</b>	<b>x1</b>
------------	--------------------------------	-----------

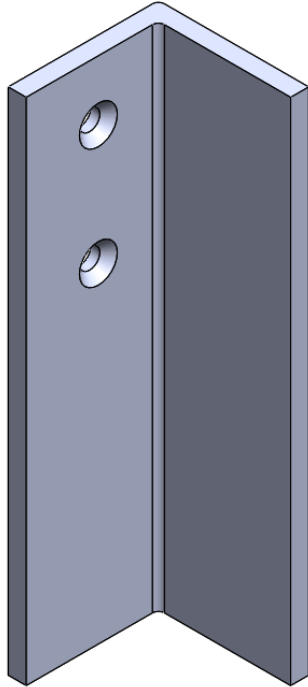


<b>43.</b>	<b>FISHING SNAP</b>	<b>x1</b>
------------	---------------------	-----------

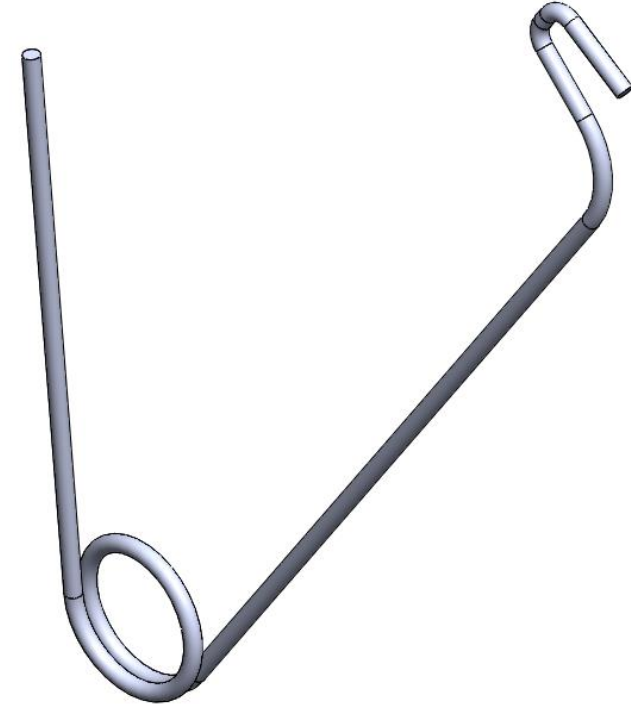


## SUB-ASSEMBLY 8: PARTS

42)

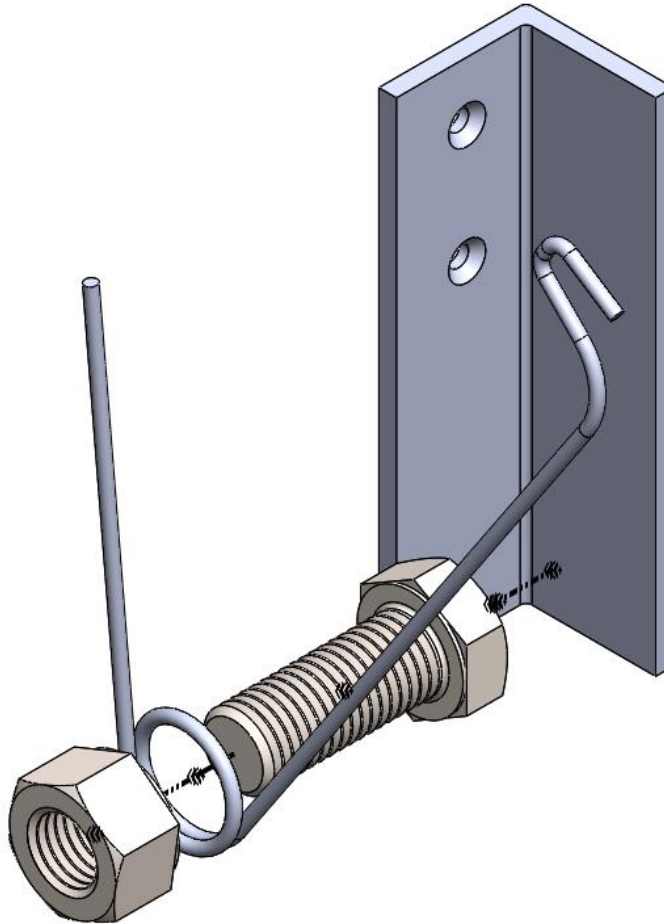


43)



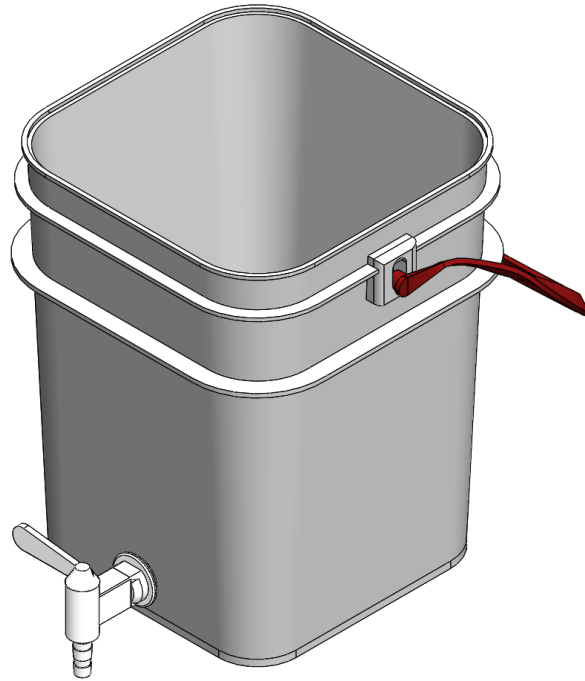
**42) DRILL HOLES IN THE SPECIFIED LOCATIONS. 43) CUT FISHING SNAP AS SHOWN.  
REFER TO ENGINEERING DRAWING FOR DIMENSIONS.**

## SUB-ASSEMBLY 8: ASSEMBLY



**ASSEMBLE THE COMPONENTS AS SHOWN. WELD THE BOLT TO THE ANGLE IRON. REFER TO ENGINEERING DRAWING FOR DIMENSIONS.**

## SUB-ASSEMBLY 9: BUCKET WITH TAP



# SUB-ASSEMBLY 9: MATERIALS

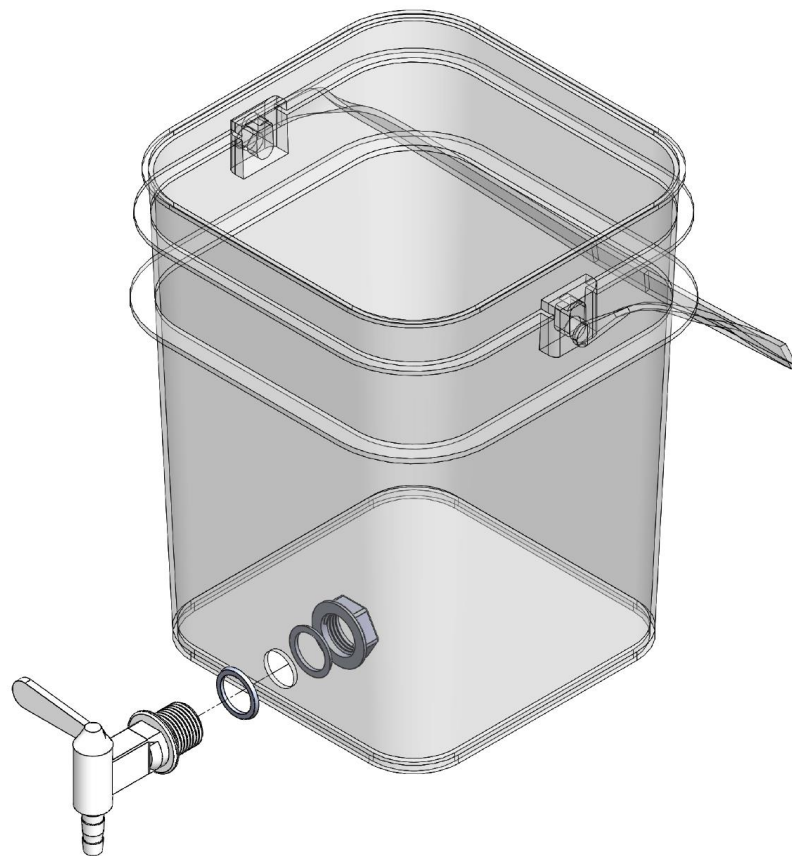


45.	20L BUCKET	x2
-----	------------	----



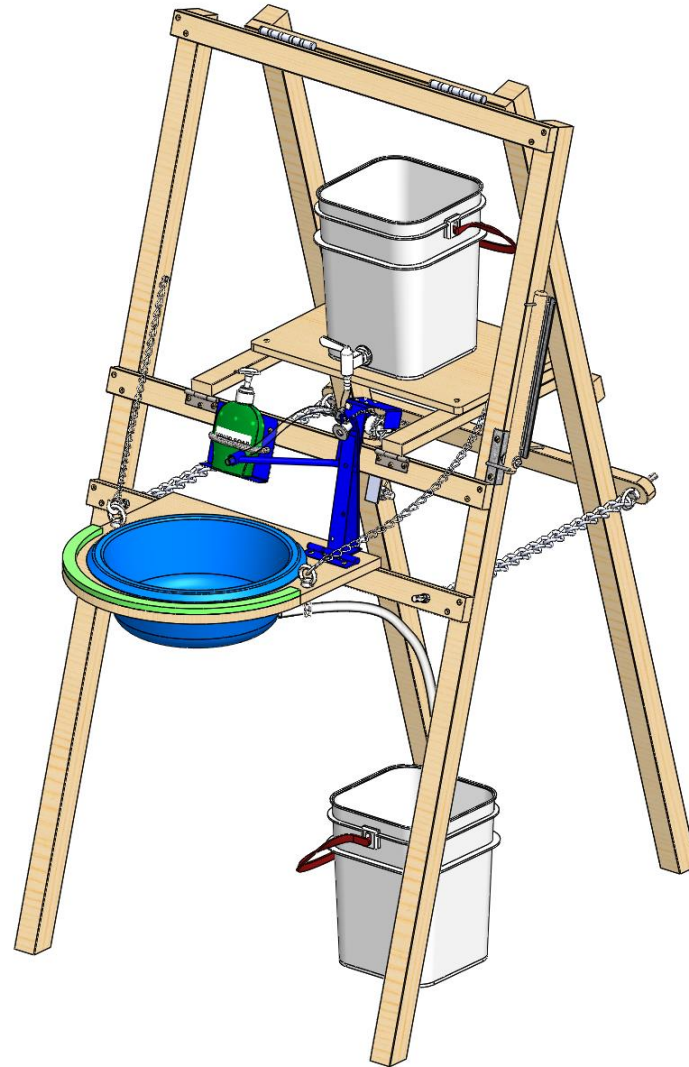
46.	PLASTIC TAP SET	x1
-----	-----------------	----

## SUB-ASSEMBLY 9: ASSEMBLY



**DRILL ½ INCH HOLE TOWARDS THE BOTTOM OF ONE BUCKET. ASSEMBLE THE COMPONENTS AS SHOWN.**

# ASSEMBLY



# ADDITIONAL MATERIALS



47.	2mm TWISTED LINK CHAIN [L= 460MM]	x2
48.	[L= 400MM]	x2



49.	EYEBOLT M8 X 50mm W/NUT	x6
-----	----------------------------	----



50.	SNAP HOOK 60 X 6MM	x2
-----	-----------------------	----



51.	1/2" HOSE [L= 235MM]	x2
-----	-------------------------	----



# ADDITIONAL MATERIALS



52.	20MM WOOD SCREW	x47
-----	-----------------	-----

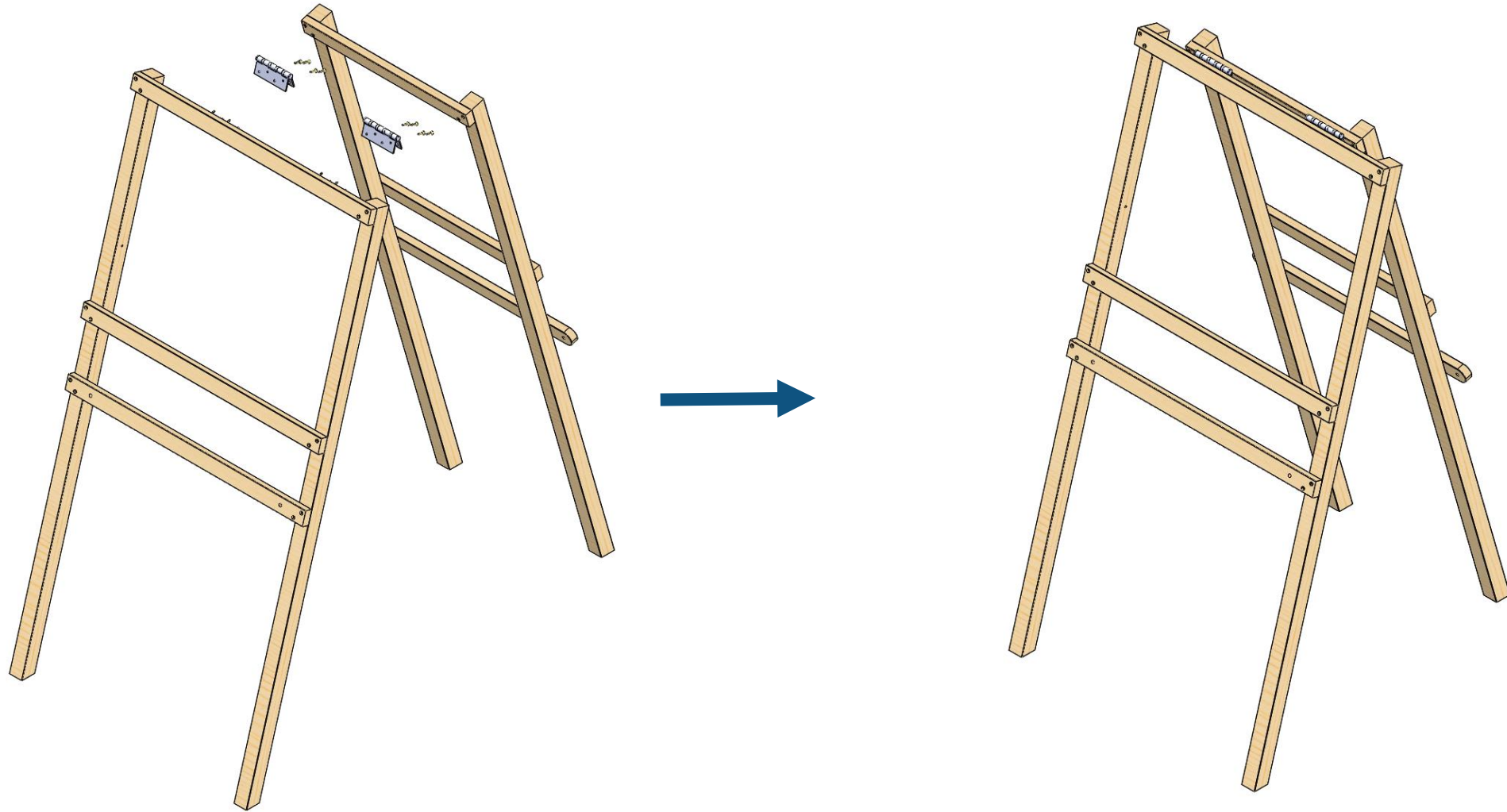


53.	M8 X 32 COACH SCREW	x2
-----	---------------------	----



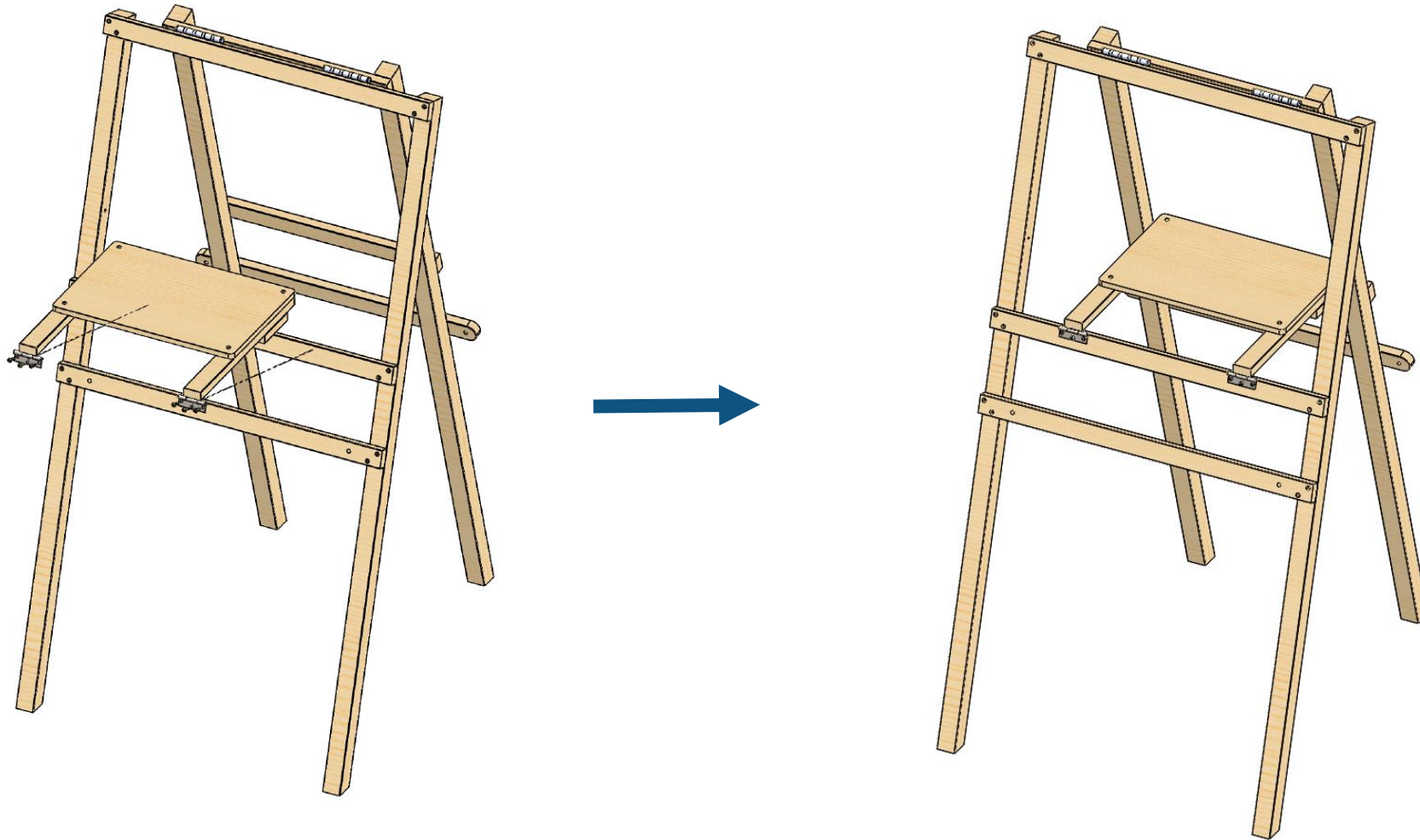
54.	3" BUTT HINGES	x2
-----	----------------	----

# ASSEMBLY: FRAMES



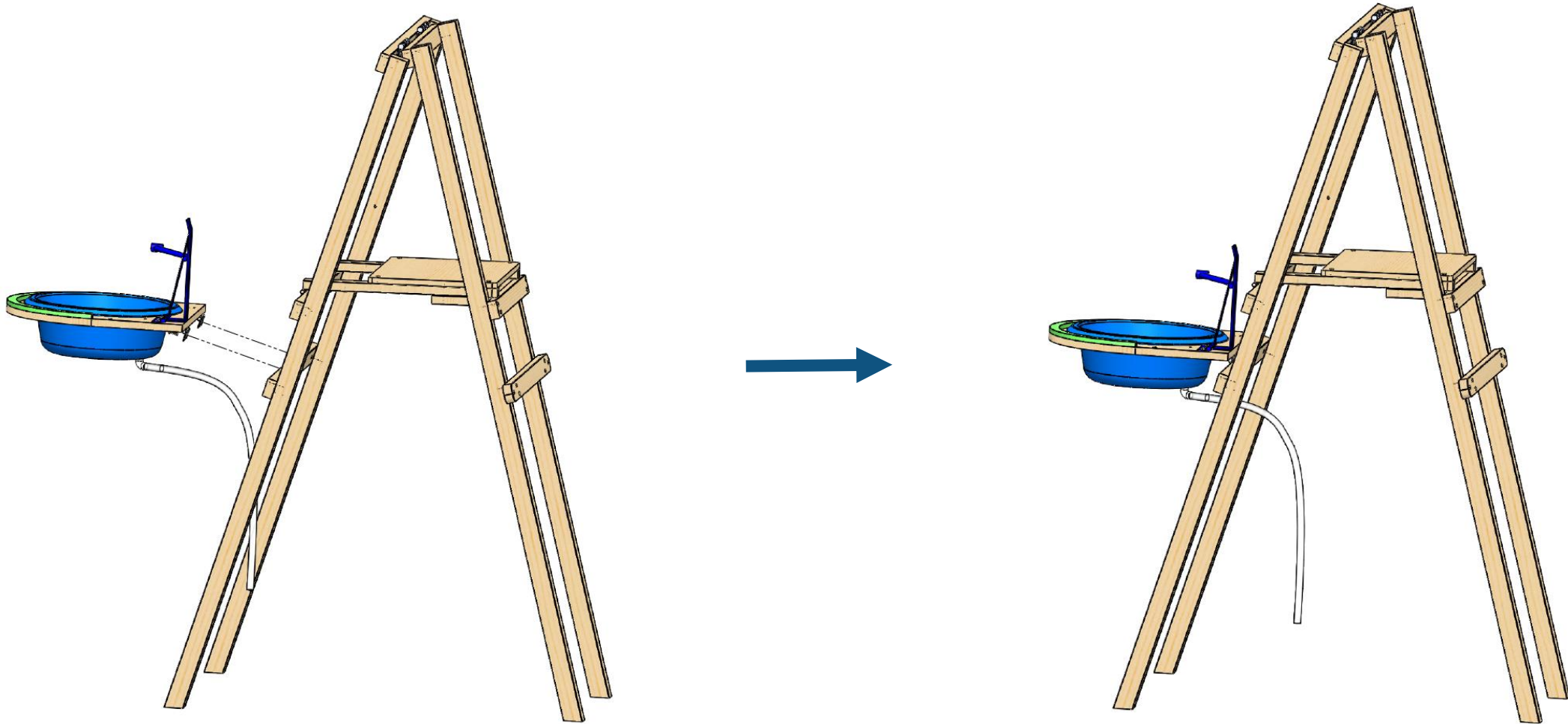
**ASSEMBLE THE COMPONENTS AS SHOWN. REFER TO ENGINEERING DRAWING FOR DIMENSIONS.**

# ASSEMBLY: SHELF



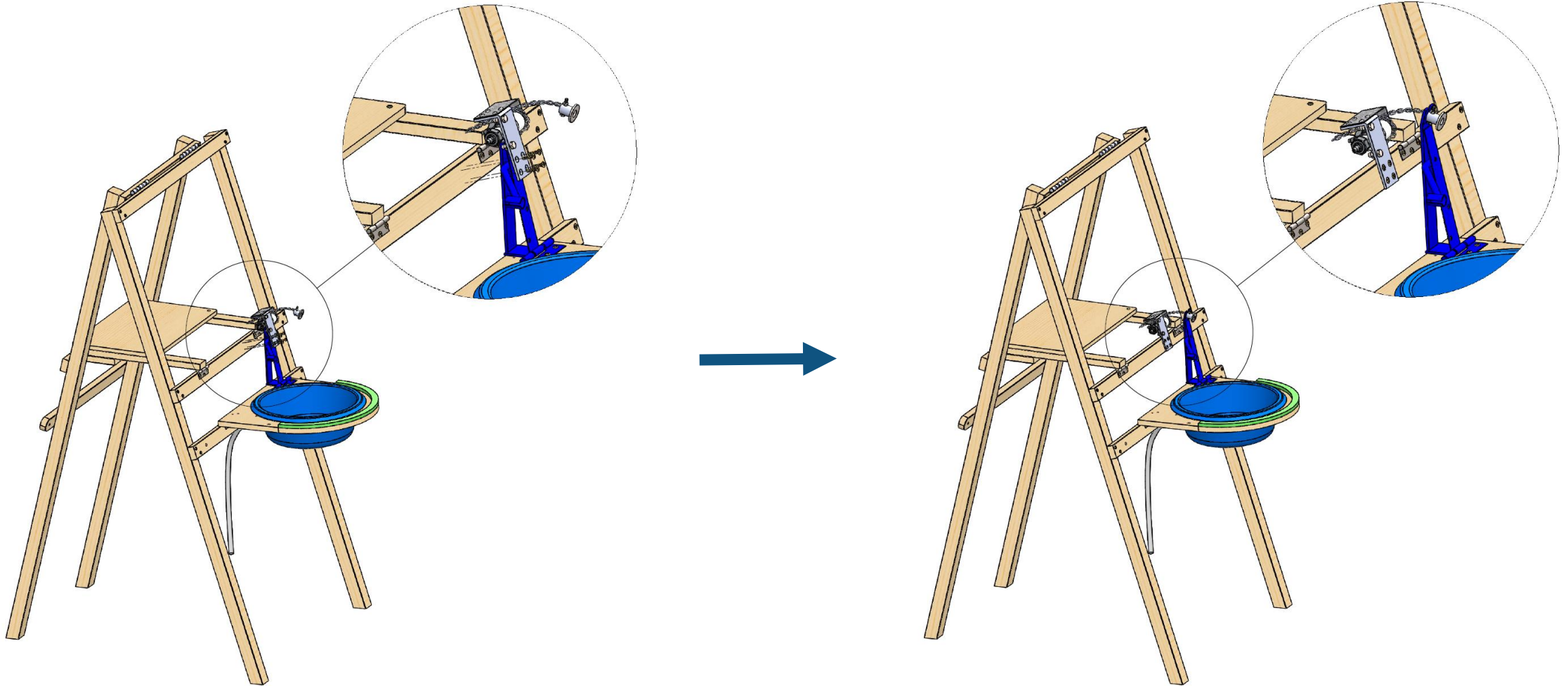
**ASSEMBLE THE COMPONENTS AS SHOWN. REFER TO ENGINEERING DRAWING FOR DIMENSIONS.**

# ASSEMBLY: BASIN HOLDER



**ASSEMBLE THE COMPONENTS AS SHOWN. REFER TO ENGINEERING DRAWING FOR DIMENSIONS.**

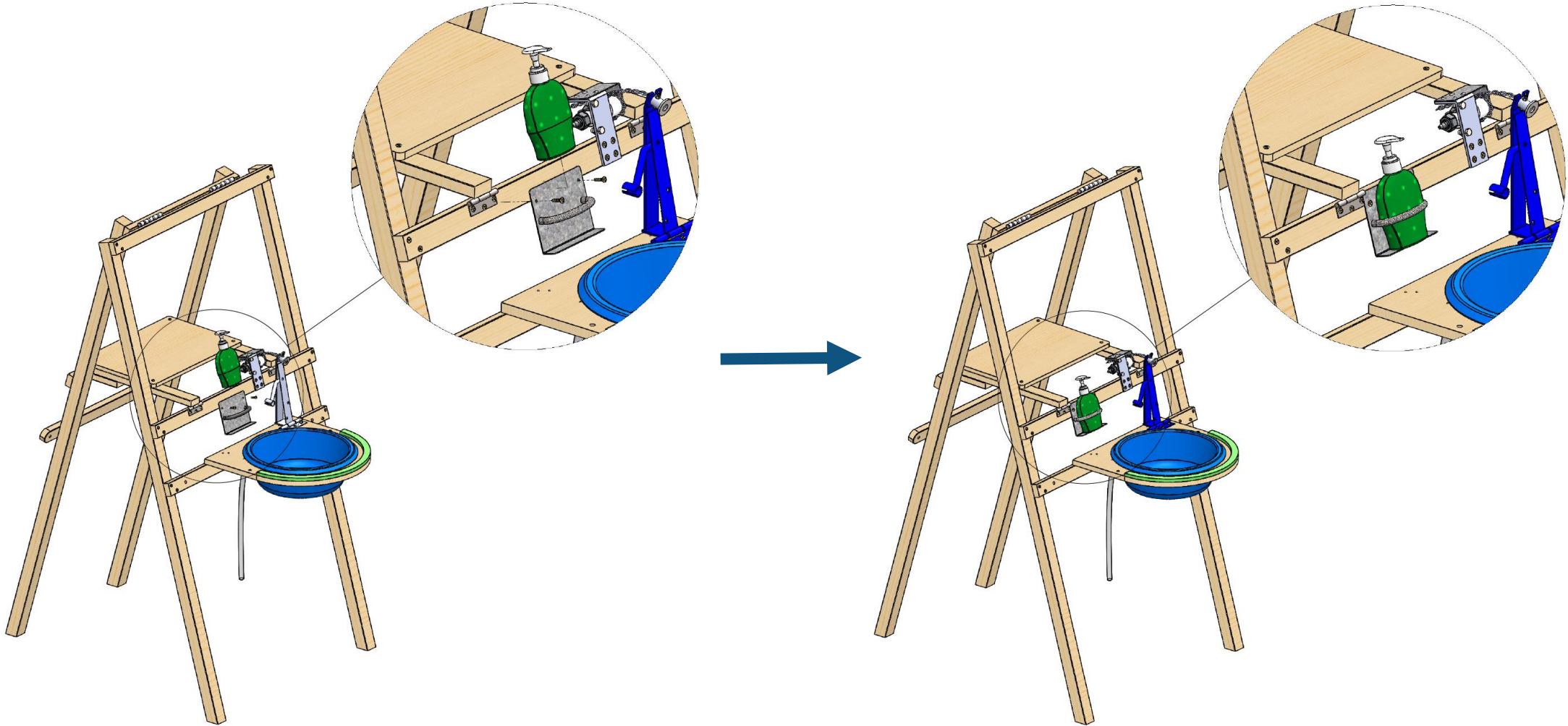
# ASSEMBLY: VALVE HOLDER



**ASSEMBLE THE COMPONENTS AS SHOWN. REFER TO ENGINEERING DRAWING FOR DIMENSIONS.**

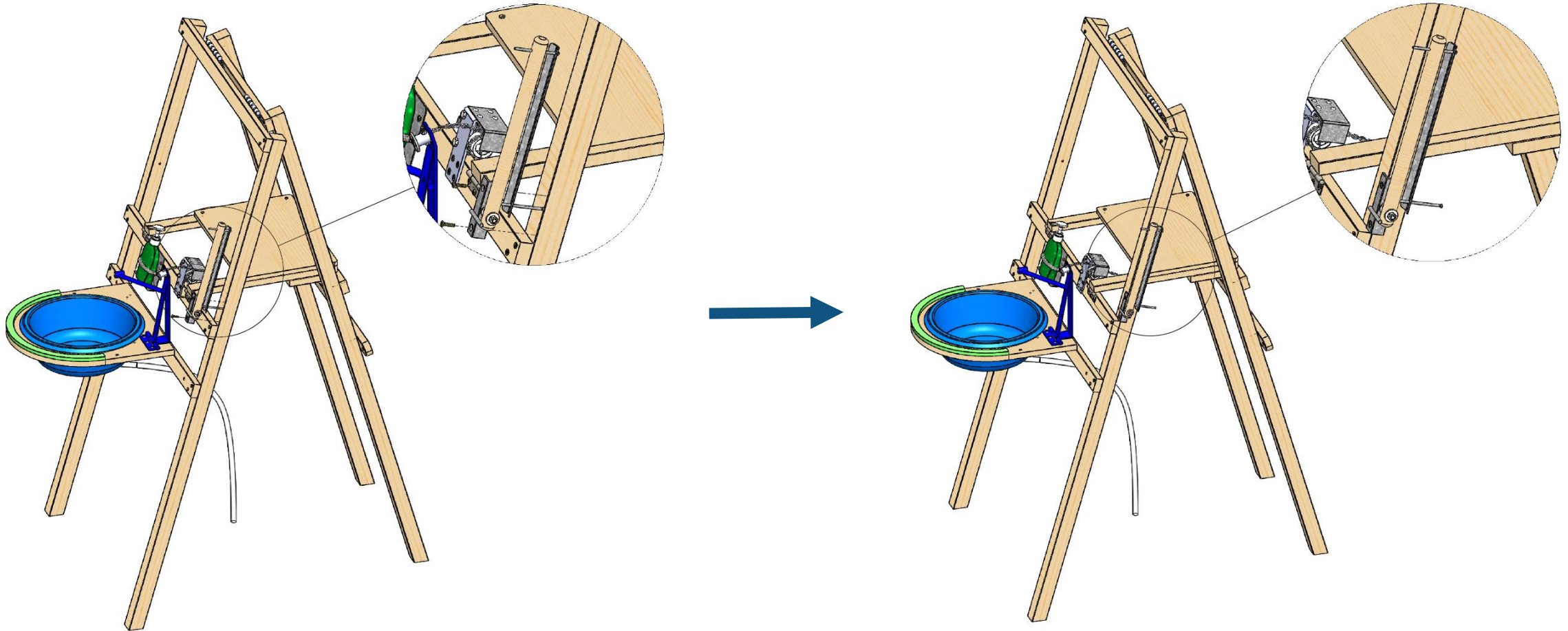


# ASSEMBLY: SOAP HOLDER



**ASSEMBLE THE COMPONENTS AS SHOWN. REFER TO ENGINEERING DRAWING FOR DIMENSIONS.**

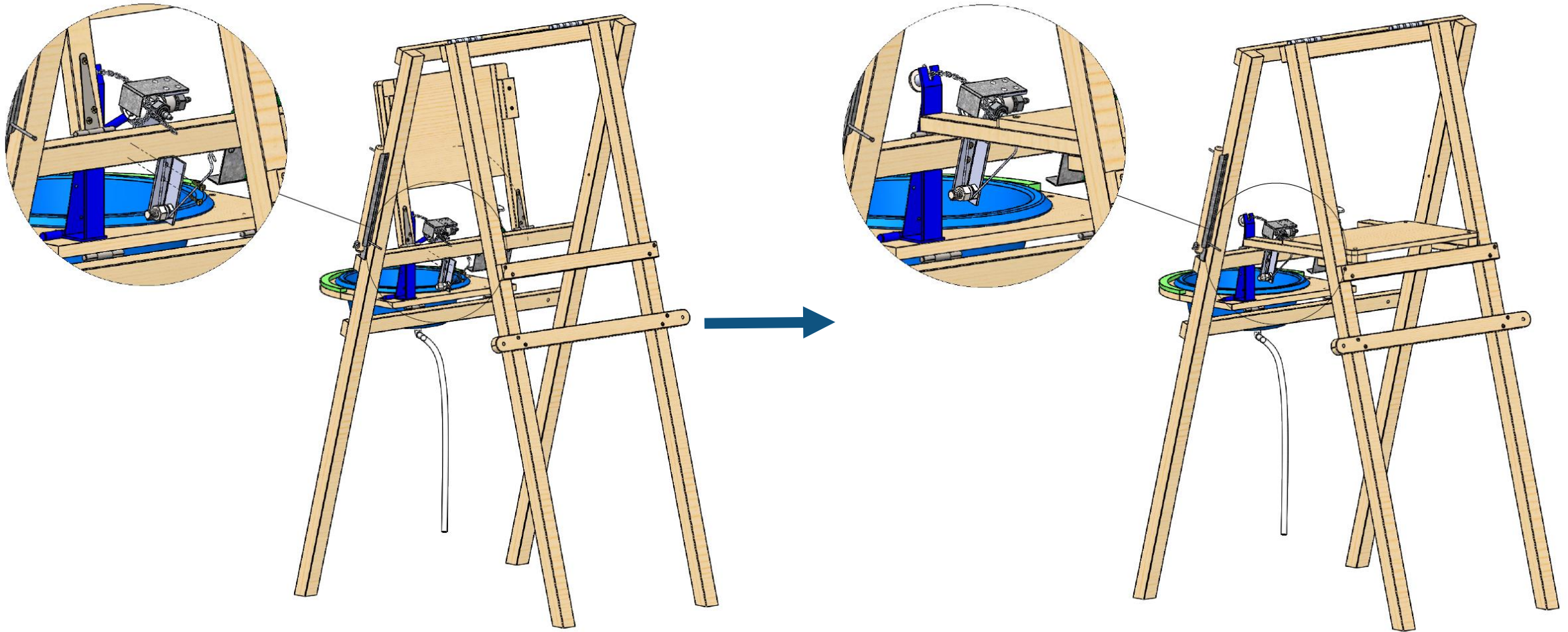
# ASSEMBLY: TOWEL HOLDER



**ASSEMBLE THE COMPONENTS AS SHOWN. REFER TO ENGINEERING DRAWING FOR DIMENSIONS.**

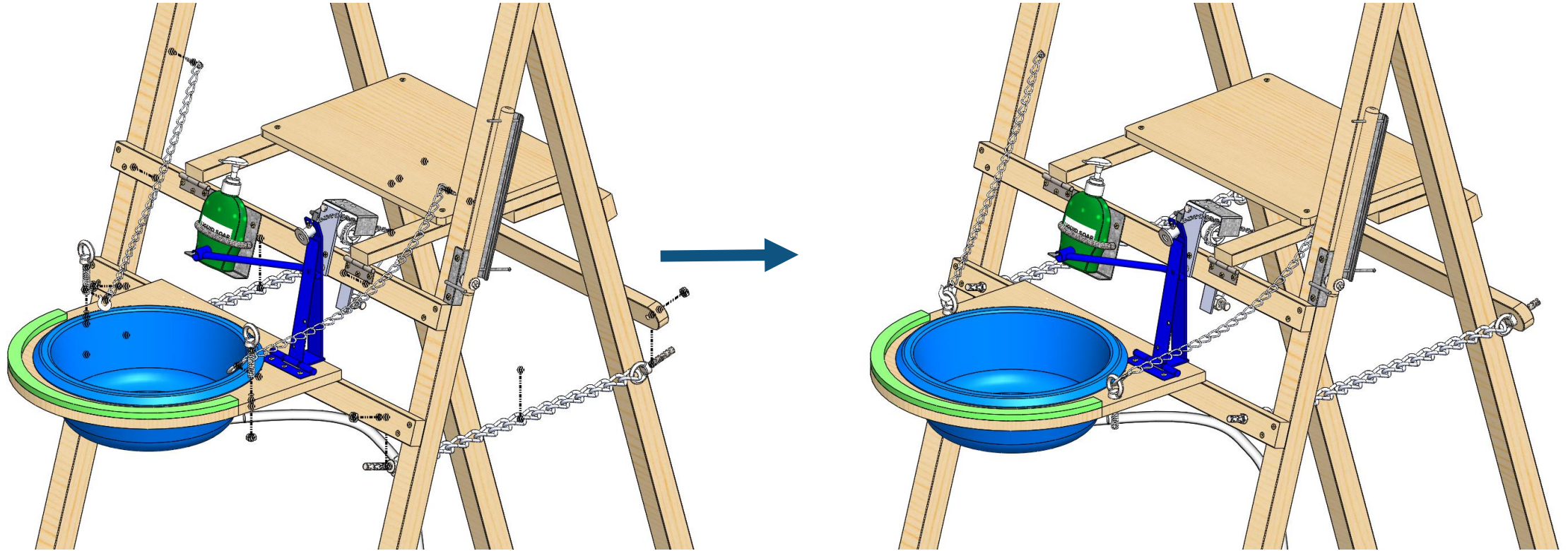


# ASSEMBLY: CLOSING MECHANISM



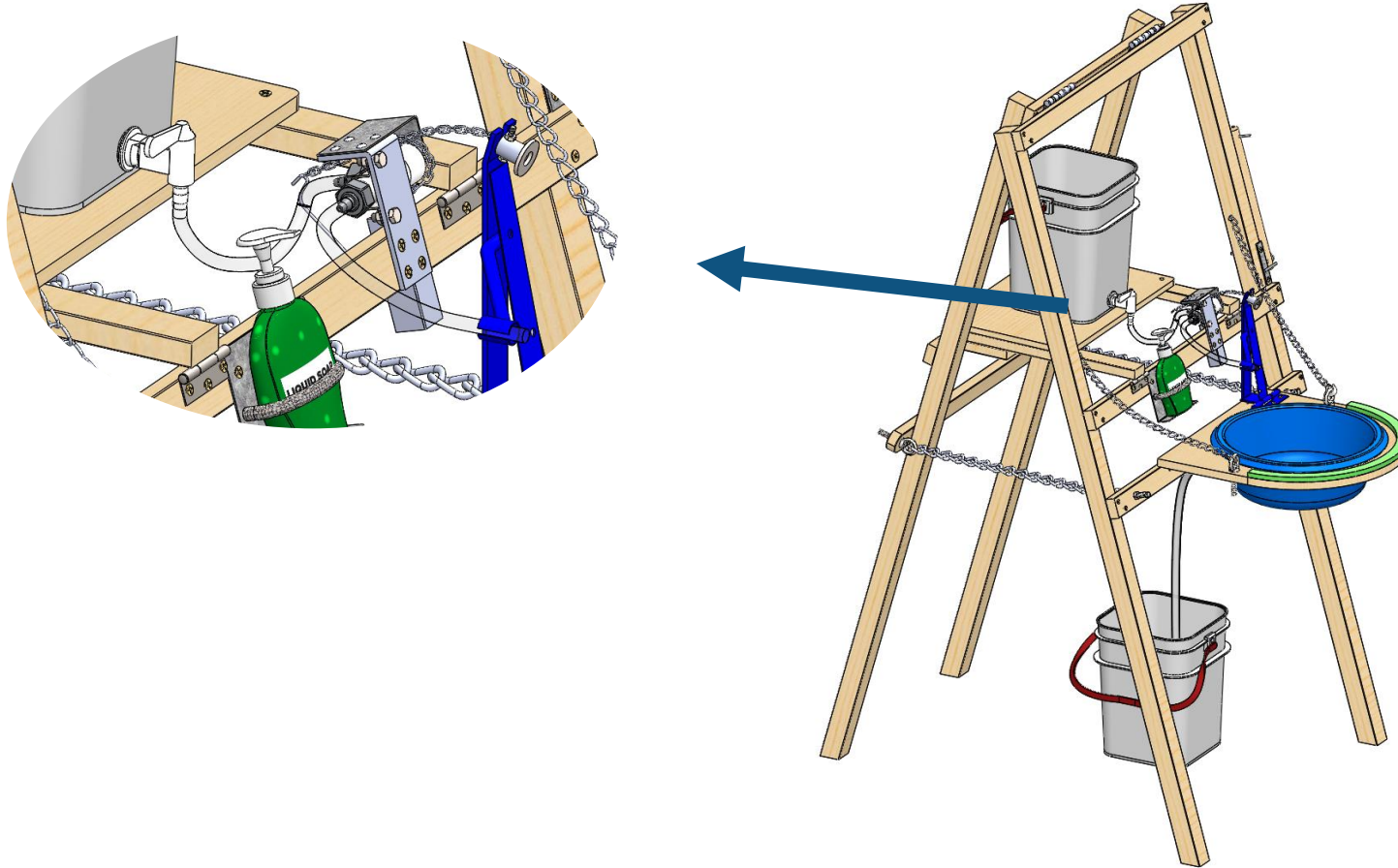
**ASSEMBLE THE COMPONENTS AS SHOWN. REFER TO ENGINEERING DRAWING FOR DIMENSIONS.**

# ASSEMBLY: CHAINS



**ASSEMBLE THE COMPONENTS AS SHOWN. REFER TO ENGINEERING DRAWING FOR DIMENSIONS.**

# ASSEMBLY: HOSE/BUCKET



**PLACE 1<sup>ST</sup> BUCKET (W/TAP) ON TOP. ATTACH 1/2in HOSE AS SHOWN. PLACE 2<sup>ND</sup> BUCKET AT THE BOTTOM**